

Time-Sensitive Emergency System of Care



Wayne Denny

Idaho Bureau of EMS & Preparedness

NAEMSO Annual Meeting 2013



Agenda

Background

Workgroup

Proposed Structure

Concerns

Questions



Background

Rural/Frontier

Exclusive “Club”

Failed Previous Attempts



2012

HQPC

Trauma System

“Montana Model”



Compromise

Legislation

Trauma, Stroke & STEMI

HCR 010



HCR 010

Convene Workgroup

System Structure

Funding



HCR 010

Enabling Legislation

Trauma

Stroke & STEMI



Workgroup

++Stakeholders ++

40+ “Regulars”

Monthly - June

The background of the slide is a photograph of a snowy mountain landscape. In the center, a white ambulance with red emergency lights is driving on a road. The mountains are covered in snow, and the sky is a pale blue with some light clouds.

Topics

Kickoff

System Design

Registries

The background of the slide is a photograph of a snowy mountain landscape. In the center, a white ambulance with red emergency lights is parked on a road. The ambulance has a blue Star of Life symbol on its side. The surrounding area is covered in snow, with rocky outcrops visible on the left. The sky is a pale blue with some light clouds.

Topics

Performance Measures

Funding

Legislation



Topics

Implementation Plan

“Marketing”

Presentation to Legislature



Consultation

Montana

Utah

Review other States

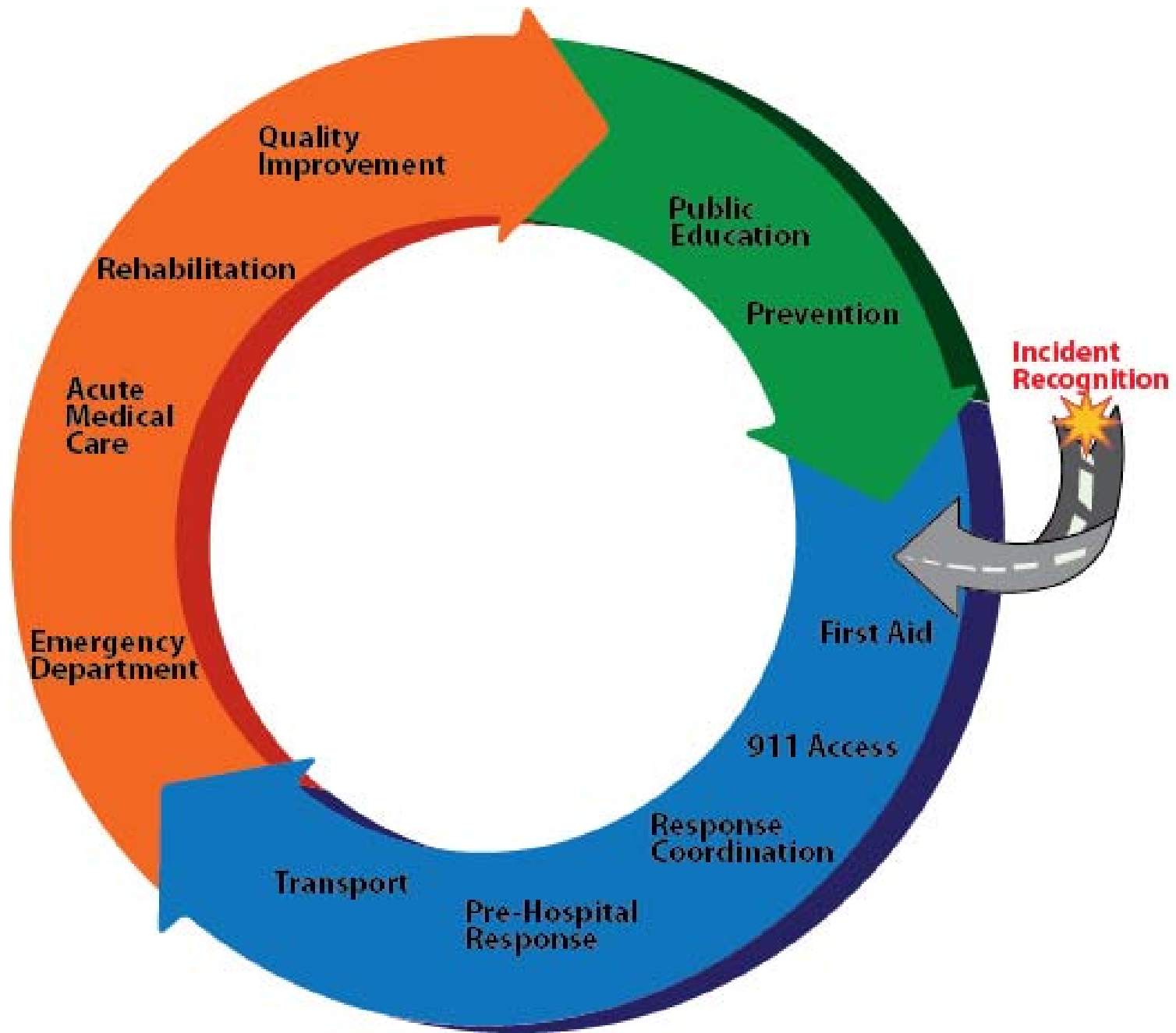


Information

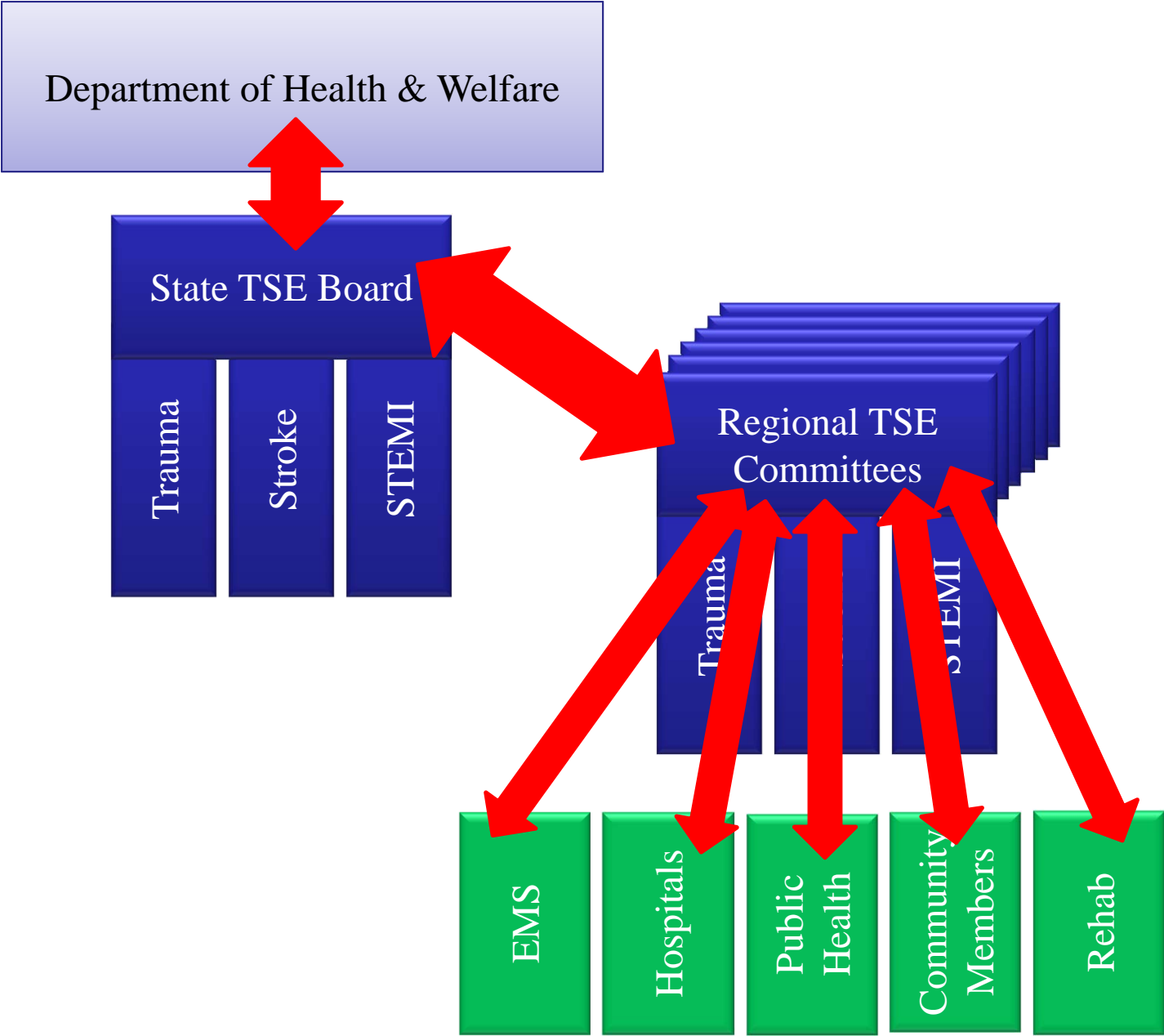
Website

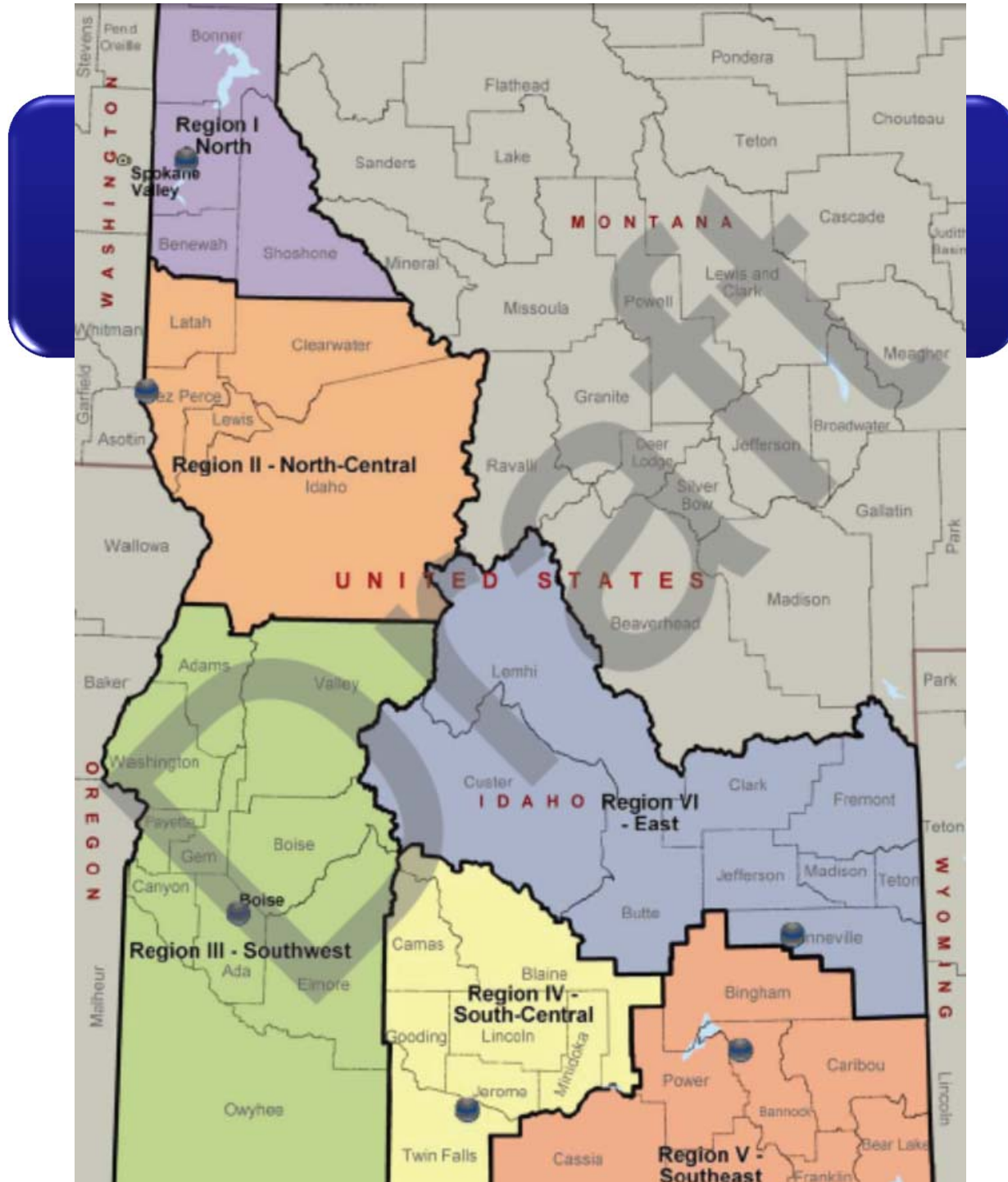
Presentations

FAQs



Structure







Board

17 Member

Hospital, EMS & Public

Establish Standards



Regional Committees

Education

QI

Coordination in the Region



Designation

Trauma I-V

Stroke

STEMI



Concerns

Funding

Under/Over Triage

Change

