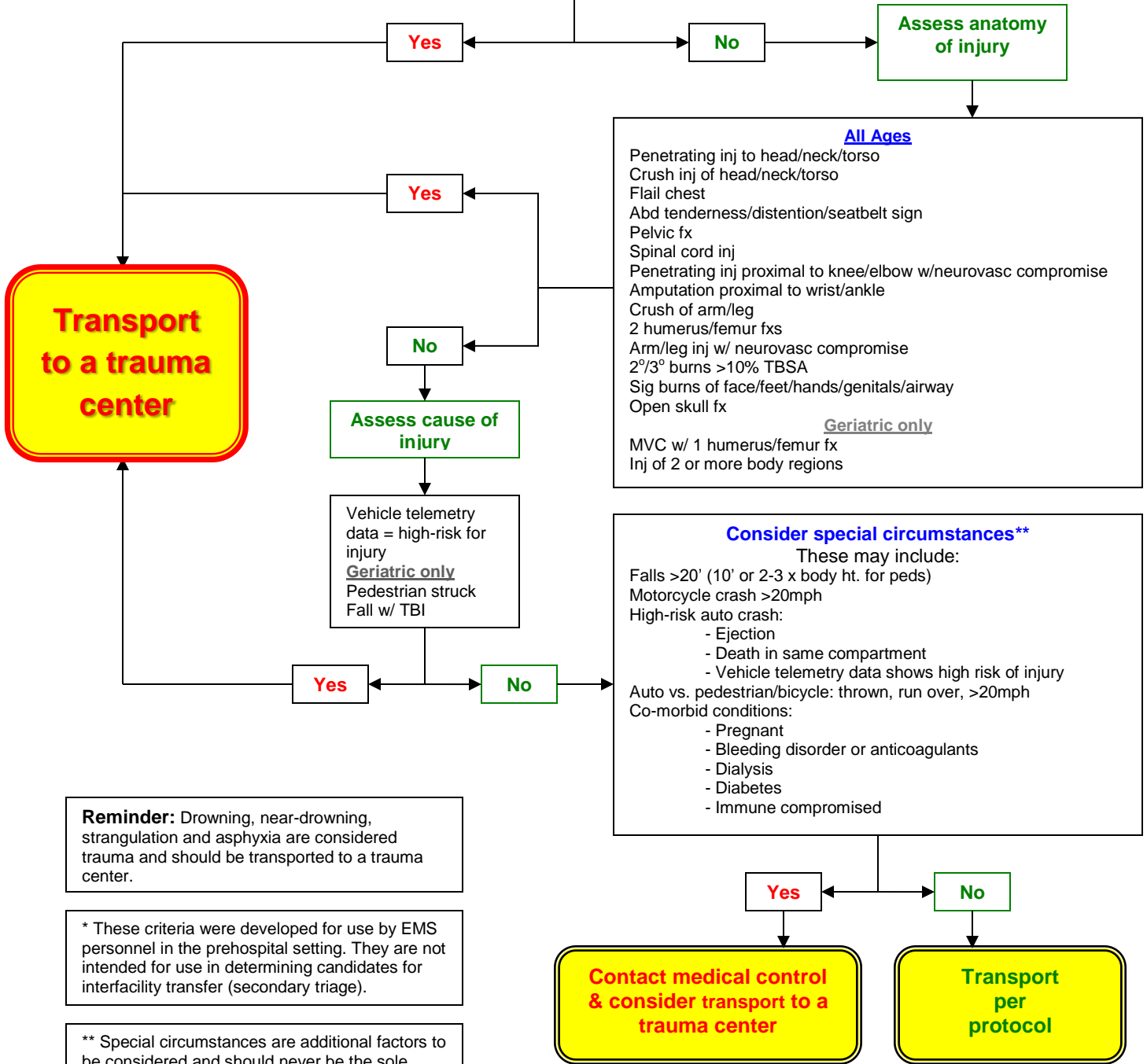


# Ohio Prehospital Trauma Triage Decision Tree – 2014 Update\*

Measure vital signs and level of consciousness

<b>Pediatric</b>	<b>Adult</b>	<b>Geriatric</b>
GCS <=13	GCS <=13	GCS <=14
Failure to localize pain	Failure to localize pain	Failure to localize pain
↓ing level of consciousness	↓ing level of consciousness	↓ing level of consciousness
Loss of consciousness >5 mins	Loss of consciousness >5 mins	Loss of consciousness >5 mins
Poor perfusion	Sys B/P <90	Sys B/P <100
Resp distress/failure	Pulse >120 w/shock	Pulse >120 w/shock
Resp <20, age <1	Resp <10 or >29	Resp <10 or >29
	Tension PTX	Tension PTX
	Needs ventilatory support	Needs ventilatory support
		GCS <15 w/TBI



**Reminder:** Drowning, near-drowning, strangulation and asphyxia are considered trauma and should be transported to a trauma center.

\* These criteria were developed for use by EMS personnel in the prehospital setting. They are not intended for use in determining candidates for interfacility transfer (secondary triage).

\*\* Special circumstances are additional factors to be considered and should never be the sole reason for triaging a patient to a trauma center.

**When in doubt, transport to a trauma center!**