

# **Model Uniform Core Criteria for Mass Casualty Triage**

## **A Briefing for NEMSAC**

**Robert R. Bass, MD, FACEP**

**Chair, FICEMS Preparedness Committee**

**March 29, 2012**

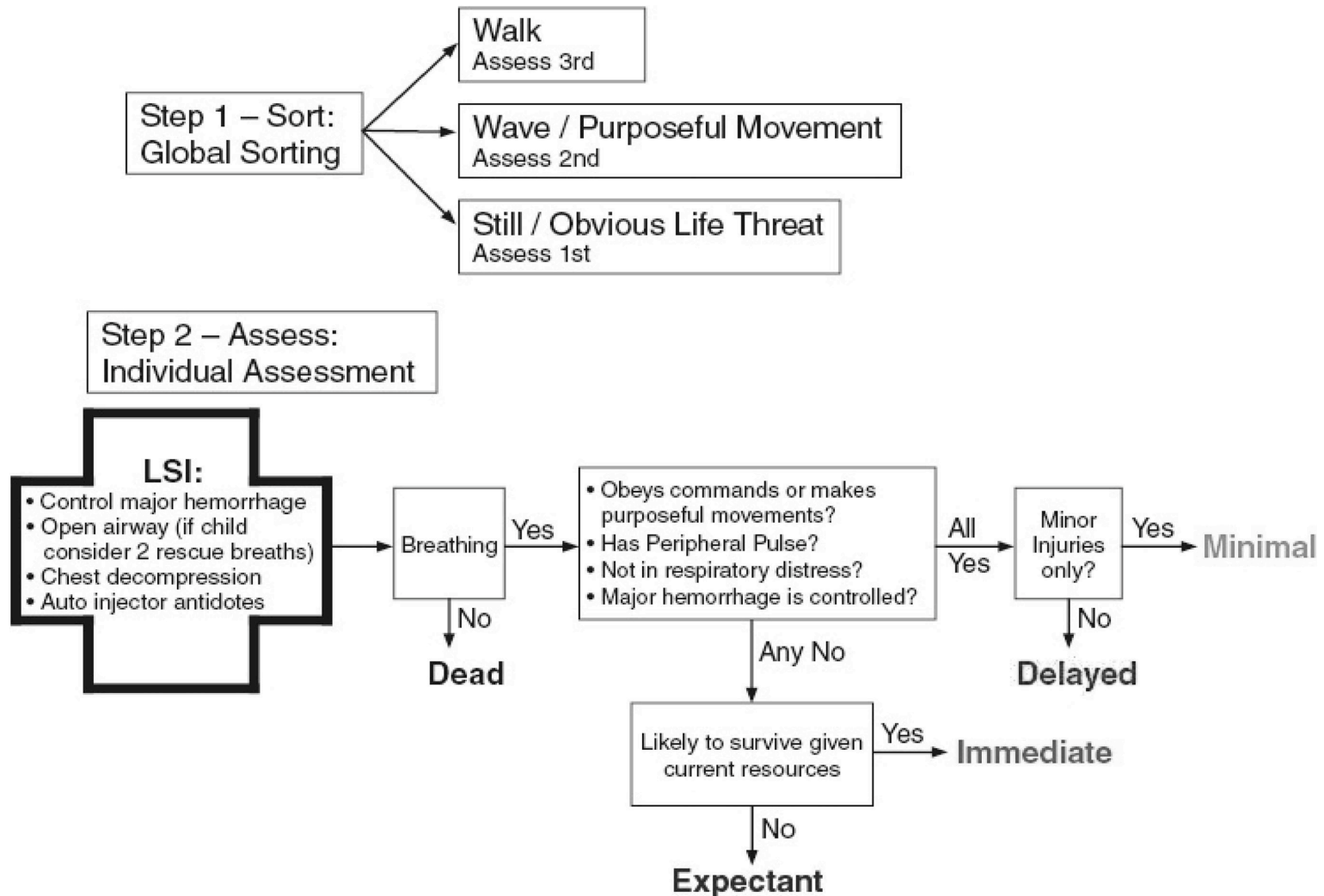
# Mass Casualty Triage

- **Enables the identification of patient care priorities when demand is greater than resources available**
- **Many MCI triage methods available with variability in approaches**
- **Need for interoperability during an MCI**
- **Recent advances in effectiveness of military MCI triage in Iraq and Afghanistan need to be incorporated into MCI triage systems**
- **Gaps still remain in the science behind MCI triage**

# Mass Casualty Triage

- **2006 – CDC (Division of Injury Control) awarded a grant to NAEMSP to make recommendations for adoption of a single national standard for MCI triage**
- **NAEMSP- Convened a group of subject matter experts**
- **Rigorous process using available evidence and consensus when necessary**
- **2008 - Published proposed national guidelines in *Disaster Medicine and Public Health Preparedness* which became known as “SALT triage”**

# SALT: Sort – Assess – Lifesaving – Interventions – Treatment/Triage



# **Development of Model Uniform Core Criteria (MUCC)**

- **Concerns remain about the number and variability of MCI triage systems**
- **CDC funded workgroup to develop model uniform core criteria for MCI triage which may be applied to any existing triage system to improve and address interoperability**
  - **24 criteria in four categories (Appendix B of the NEMSAC briefing document)**
  - **Categories: General Considerations, Global Sorting, Lifesaving Interventions, Individual Assessment**
  - **Published in Disaster Medicine and Public Health Preparedness in 2011**
- **MUCC are currently endorsed by 13 national organizations with concurrence by HRSA Maternal and Child Health Bureau EMSC Program (Appendix C of the briefing document)**

# **Current Status of MUCC and MCI Triage**

- **Two articles published on training in and application of the SALT approach**
- **No head to head study comparing SALT to other MCI systems**
- **Surveys indicate most states and local jurisdictions mandate particular MCI triage systems. While most use START, other variations exist.**
- **Several areas are reported to be adopting the SALT approach to MCI triage which introduces more variability**
- **No current approach to MCI triage is defined in the EMS Education Standards**

# **FICEMS Action**

- **On December 19<sup>th</sup>, FICEMS was briefed by the TWG on the on potential development of an implementation strategy for MUCC**
- **FICEMS is requesting input from NEMSAC on the role of FICEMS in implementing the MUCC**
- **The input is requested on a series of key questions**
- **Before proceeding, are there any questions on the background information?**

# Question 1

**Should FICEMS support the national adoption of MUCC?**

- What reasonable national metrics could be used by FICEMS to measure adoption of MUCC principles by the national EMS community over time?**
- Is there a need for a national, state and/or local process, criteria, and organization to determine what triage tools are MUCC compliant?**



# Question 2

- **Should there be an addendum published to the National EMS Education Standards referencing the principles of MUCC?**
  - **Should additional actions be taken by FICEMS member agencies to support the initial and continuing education of EMS workers in the principles of MUCC, if so what additional actions?**

# Question 3

**What are the most significant common barriers that State, territorial and tribal governments might face in supporting adoption of MUCC?**

- Are there specific actions FICEMS member agencies should take to support State, territorial and tribal governments in overcoming these barriers to adoption of MUCC?**

# Question 4

**Are there specific actions FICEMS should undertake to engage non-Federal national EMS stakeholder organizations in supporting national implementation of MUCC?**



# Meeting of the National EMS Advisory Council

Thursday, March 29, 2012