

CRISIS STANDARDS OF CARE

The Ohio EMS Experience

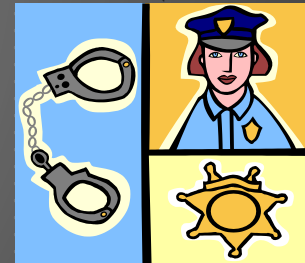
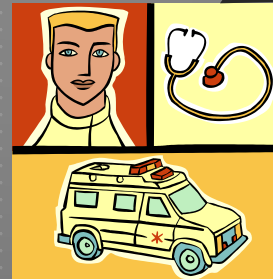
Carol A. Cunningham, M.D., FAAEM, FACEP

State Medical Director

Ohio Department of Public Safety, Division of EMS

EMERGENCY MEDICAL DISPATCH: “THE GATEKEEPER”

- ▶ 9-1-1 link to the community
- ▶ Initial agency notified of an event
- ▶ Determines need/level of response
- ▶ Allocates resources
- ▶ Adjusts resource allocation based upon data from
 - Incident command
 - Ongoing 9-1-1 calls/community needs
 - Escalation/resolution of event
 - Availability of resources



OHIO DEPARTMENT OF PUBLIC SAFETY, DIVISION OF EMS

- ▶ Authority over Ohio EMS providers
- ▶ Authority over Ohio medical transportation
(minimum staffing matrix, vehicles)
- ▶ No authority over emergency medical dispatch

THE FRIENDSHIP TRAIN: OHIO EMS + EMD

- ▶ Multi-tiered system for emergency medical dispatch and EMS
- ▶ EMD Low- Priority (Non-Transport) Criteria
- ▶ EMS Exclusion and Triage Criteria for Non-Transport
- ▶ EMS Adaptation Matrix for **Conventional**, **Contingency**, and **Crisis** Conditions



EMS ADAPTATION MATRIX FOR **CONVENTIONAL**, **CONTINGENCY**, AND **CRISIS** CONDITIONS

- ▶ Dispatch
- ▶ Response
- ▶ Patient assessment
- ▶ Transportation
- ▶ Adhere to normal day to day operations for **conventional** conditions

DISPATCH CONTINGENCY

- ▶ Prioritize calls according to potential threat to life or time-critical complaints
- ▶ Initiate selective diversion for dispatched resources (all others designated as pending/delayed)

CRISIS

- ▶ Activate EMD Low Priority Criteria (Non-Dispatch)

RESPONSE

CONTINGENCY

- ▶ Modify crew assignments for optimal response
- ▶ Change EMS assignments to closest available unit rather than ALS/BLS if available
- ▶ Consider activation of mutual aid and/or disaster response plan

CRISIS

- ▶ Activate EMS Exclusion and Triage Criteria for Non-Transport

PATIENT ASSESSMENT

CONTINGENCY

- ▶ Require patients with minor injuries/illnesses to use their own transportation

CRISIS

- ▶ Activate EMS Exclusion and Triage Criteria for Non-Transport

TRANSPORTATION

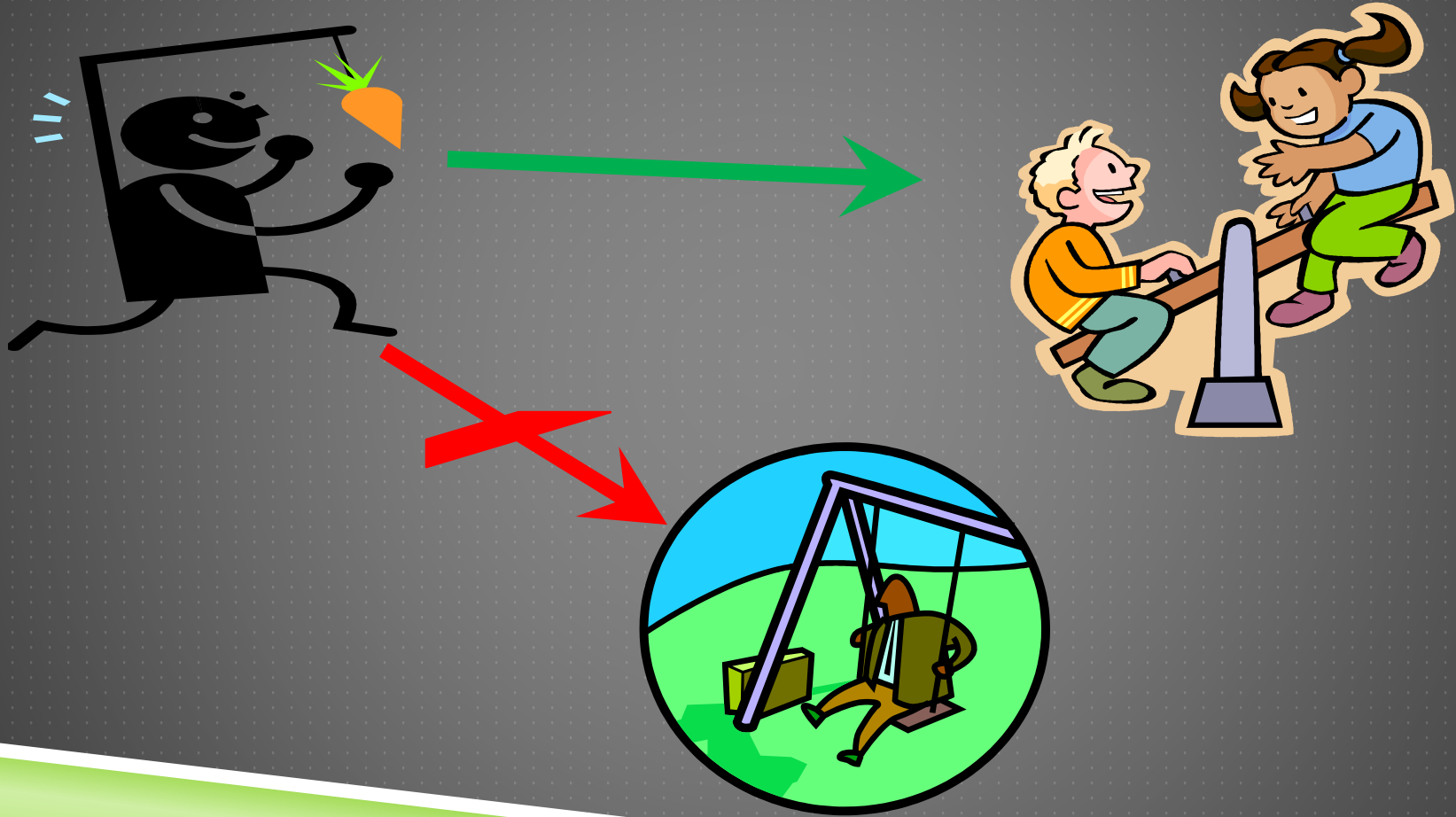
CONTINGENCY

- ▶ Consider “batched” transport
- ▶ Answer subsequent call(s) before transport of stable patients to the hospital
- ▶ Consider other public/private forms of transportation
- ▶ Self-transport

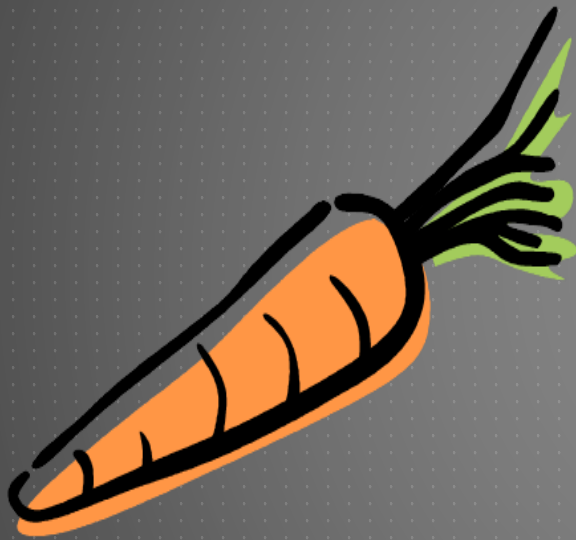
CRISIS

- ▶ Active EMS Exclusion and Triage Criteria for Non-Transport

COMPLIANCE WITH THE PLAN



THE CARROT: IMMUNITY



- ▶ Adoption of the Ohio Medical Coordination Plan, Ohio's Crisis Standards of Care plan, is voluntary
- ▶ Community-based, local, and regional partnerships are encouraged
- ▶ Parties that elect to utilize and are compliant with the Ohio Medical Coordination Plan are granted **immunity protection**



Serving

Ohio

24/7/365

