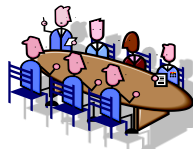




## Highway Incident & Transportation Systems Committee

The **HITS Committee** is committed to engaging NASEMSO on highway safety issues relevant to emergency medical services.

By collaborating with our highway safety partners at the national and state levels, the HITS Committee's ultimate goal is to reduce the rates of death and disabling injury from motor vehicle crashes on our nation's highways.







## HITS Committee

### *Leadership*

The HITS Committee supports leadership under these principle goals:

-  **Goal #1:** Increase NASEMSO representation at national highway safety-related meetings.
-  **Goal #2:** Recruit and engage HITS members to serve as active NASEMSO liaisons to various highway safety-related national committees and organizations.







## HITS Committee

### *Systems Development*

The HITS Committee supports systems development under these principle goals:

-  **Goal #3:** Educate State EMS Offices on effective collaboration with their respective state highway safety counterparts. Provide tools for use by State EMS Officials when interacting with highway safety colleagues and communities.
-  **Goal #4:** Promote the further use and application of EIRRA (EMS Incident Response & Readiness Assessment) for measuring preparedness for response to highway MCIs as well as other manmade or natural disasters.







## HITS Committee

### *Quality Improvement – “QI”*

The HITS Committee supports performance improvement under these principle goals:

-  **Goal #5:** Promote the concept of a model inventory for EMS similar to the model inventories of highway partners (MIRE, MMUCC, etc). Seek opportunities for further development of the MIECE Proof of Concept completed by NASEMSO in 2011
-  **Goal #6:** Support and promote the National EMS Information System (NEMSIS) in interactions with highway safety colleagues to ensure the adoption of data standards that maximize data sharing and lead to improvement in crash victim/patient outcomes





## HITS Committee

The HITS Committee 2013 work plan will continue to focus on long term strategies previously initiated, as well as those short term strategies not yet completed. These include the following:

- ❏ Recruit HITS Committee members to represent NASEMSO at national highway safety-related meetings and serve as established members of highway safety committees and organizations. Such representation is intended to
  - ❏ mutually educate NASEMSO members and highway safety colleagues about each other's respective disciplines;
  - ❏ build lasting professional relationships with highway safety peers; and
  - ❏ promote cooperation in addressing mutual goals of saving lives and reducing debilitating injuries from motor vehicle crashes.  
[Goals 1 &2]





## HITS Committee

- ❏ Educate NASEMSO members on the availability of opportunities for collaboration with state highway safety counterparts in their respective states. Develop “highway safety guide” on federal highway safety programs in all states including those where specific EMS components are required. Create tools for state EMS officials to use (power point presentations, talking points) when interacting with highway safety representatives. [Goal 3]
- ❏ Distribute EIRRA Guidelines and summary information at highway safety and EMS meetings. Seek opportunities to formally present EIRRA at EMS, highway safety, and preparedness meetings. [Goal 4]





## HITS Committee

- ❏ Distribute educate MIECE Guidelines and summary information at highway safety and EMS meetings. Seek opportunities to formally present MIECE at EMS, highway safety, and preparedness meetings. [Goal 5]
- ❏ Develop brief summary and/or talking points for “lay persons” on NEMSIS to be distributed at national highway safety meetings and for use by state EMS officials when participating in state highway safety meetings (TRCC, strategic highway safety planning). [Goal 6]





# Highway Incident & Transportations Systems Committee

