

Dia Gainor
Emergency Medical Services Director, State of Idaho
Chair, NASEMSO Highway Incident & Transportation Systems Committee



Ambulance Service on "Acorn" Street. Barney O'Donnor with chauffeur Jim Harvey on left, George Barker with chauffeur Bobby Gross on right. 1914.



EMS & RURAL HIGHWAY MASS CASUALTIES: A Case for Catching Up

NASEMSO RURAL HIGHWAY MASS CASUALTY PROJECT

- Driven by NTSB Recommendations in the Mexican Hat Motorcoach Crash Report
- Funded by NHTSA
- Partnership with NHTSA, FHWA, AASHTO, GHSA, NAEMSP, ACS-COT, IAFC, et al.
- Two deliverables:
 - Event Response Readiness Assessment for EMS
 - Model Inventory of Emergency Care Elements



EVENT RESPONSE READINESS ASSESSMENT for EMS

EVENT RESPONSE READINESS ASSESSMENT

- Q: “What advanced prep/planning would we be doing in advance of a mass casualty incident on this stretch of highway in order to be optimally prepared?”
- Scale of responses from “none” to “awesome”
- Activity focused
- Allows for identification of opportunities for improvement

EVENT RESPONSE READINESS ASSESSMENT

- Personnel
- Infrastructure
- Emergency Care System
- Public Awareness and Notification
- Evaluation
- Mass Casualty Planning
- Governance

Timeline - ERRRA

- Pilot in four locations
12/10
- Deliver to NHTSA
4/11



2009 Maps of Trauma Center Access

Continental US

Alaska

Hawaii

-- Select a state

Print Map Support

Select Response Time:

60 Minutes

Select Transport Method:

Ambulance

Map Layers

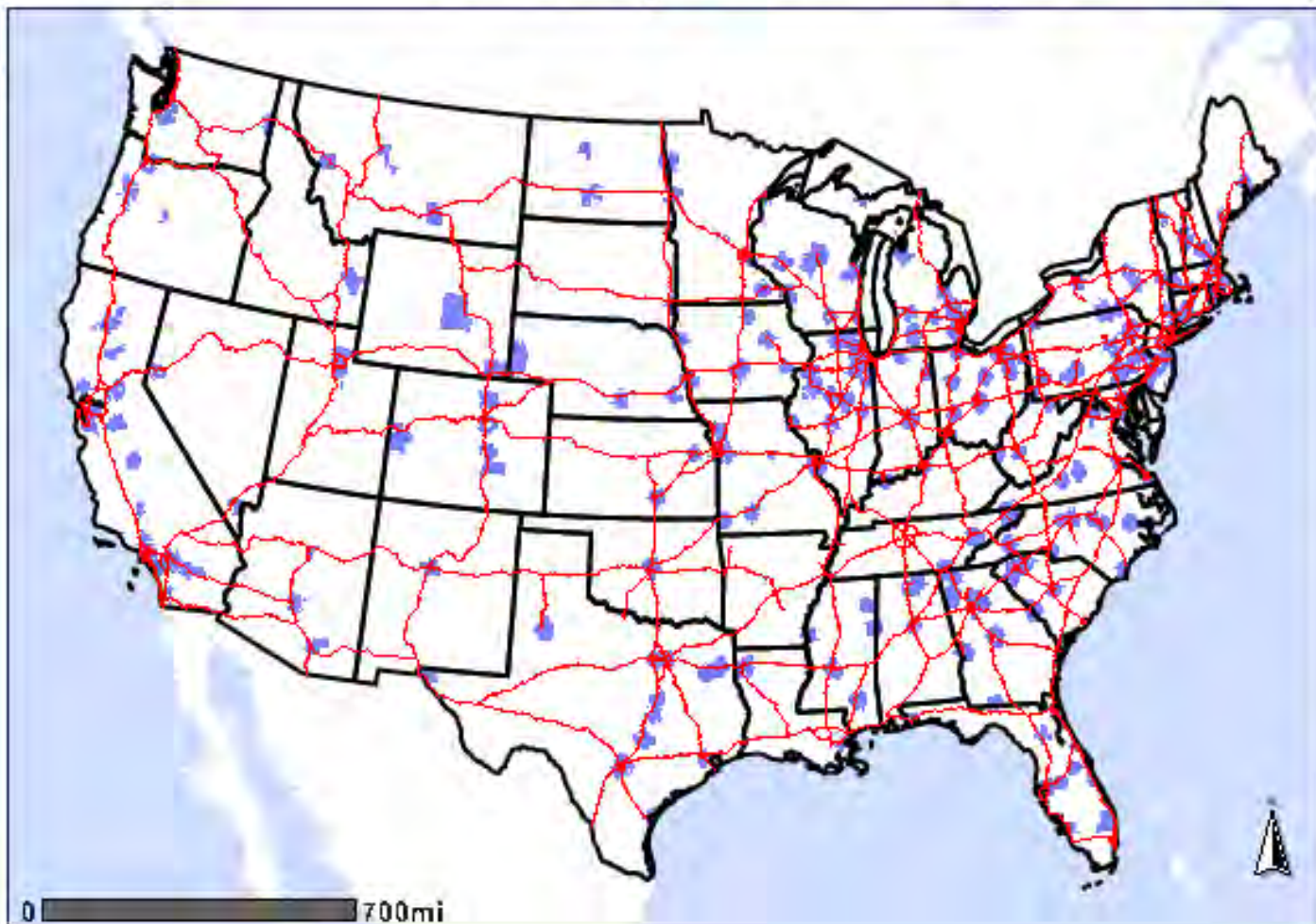
- Major Cities
- States
- Interstates

Level I/II Trauma Center Coverage

| | % Popn | % Land |
|------------------|--------|--------|
| Existing System: | 56.58% | 8.33% |

Legend

- Helicopter
- Ambulance
- Either



Location & Description Text & Detour Info Quantities & Times Email

Location Type: **Major Road** Route Designator: **US 95**

Between: **Salmon Drive** MP: **196.725**

And: **Race Creek Road** MP: **196.752**

Direction: North South DOT Miles Linear Ref.

Categories: **---Select Category---** **Add**

Descriptors: **---** **Add as Cause**

Descriptor(s) Selected:

Crash **Move Up**

Reduced to one lane **Move Down**

Remove

Priority: **4** Start Time:

Duration: **Until further notice** or End Time:

Current Event Description:

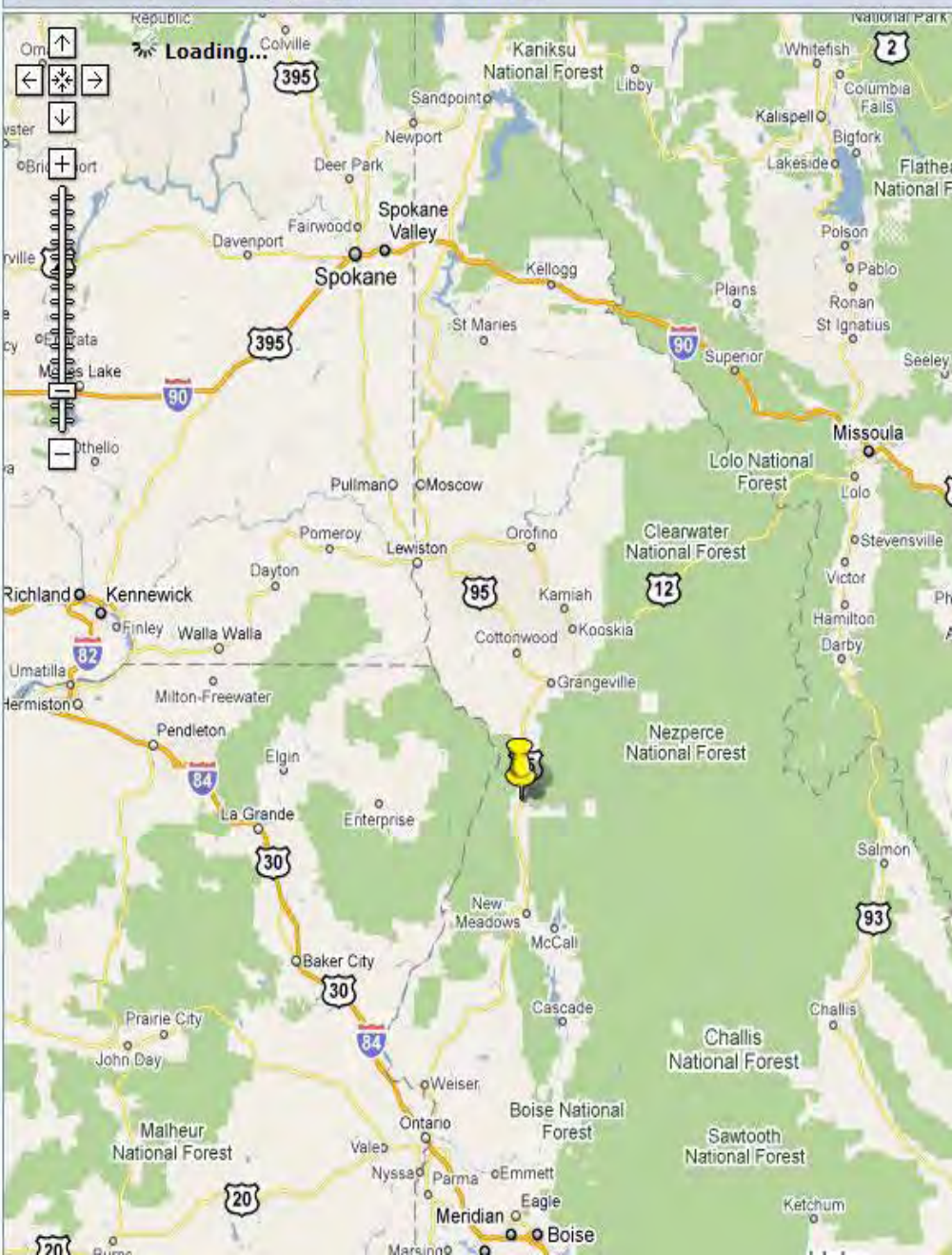
US 95 between Salmon Drive and Race Creek Road (near Riggins) **Look out for an accident. The roadway is reduced to one lane.**

ID: CARS4-xxx.1 Author: kbessey

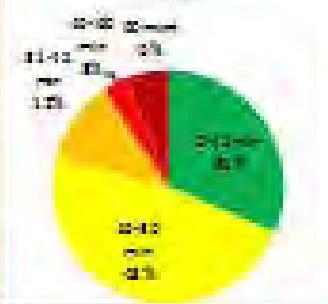
Priority: 4 Updated: 10:46 AM, 9/21/10

Audio Preview **Cancel** **Create**

--- Select Map --- **Go** **Future Info:**

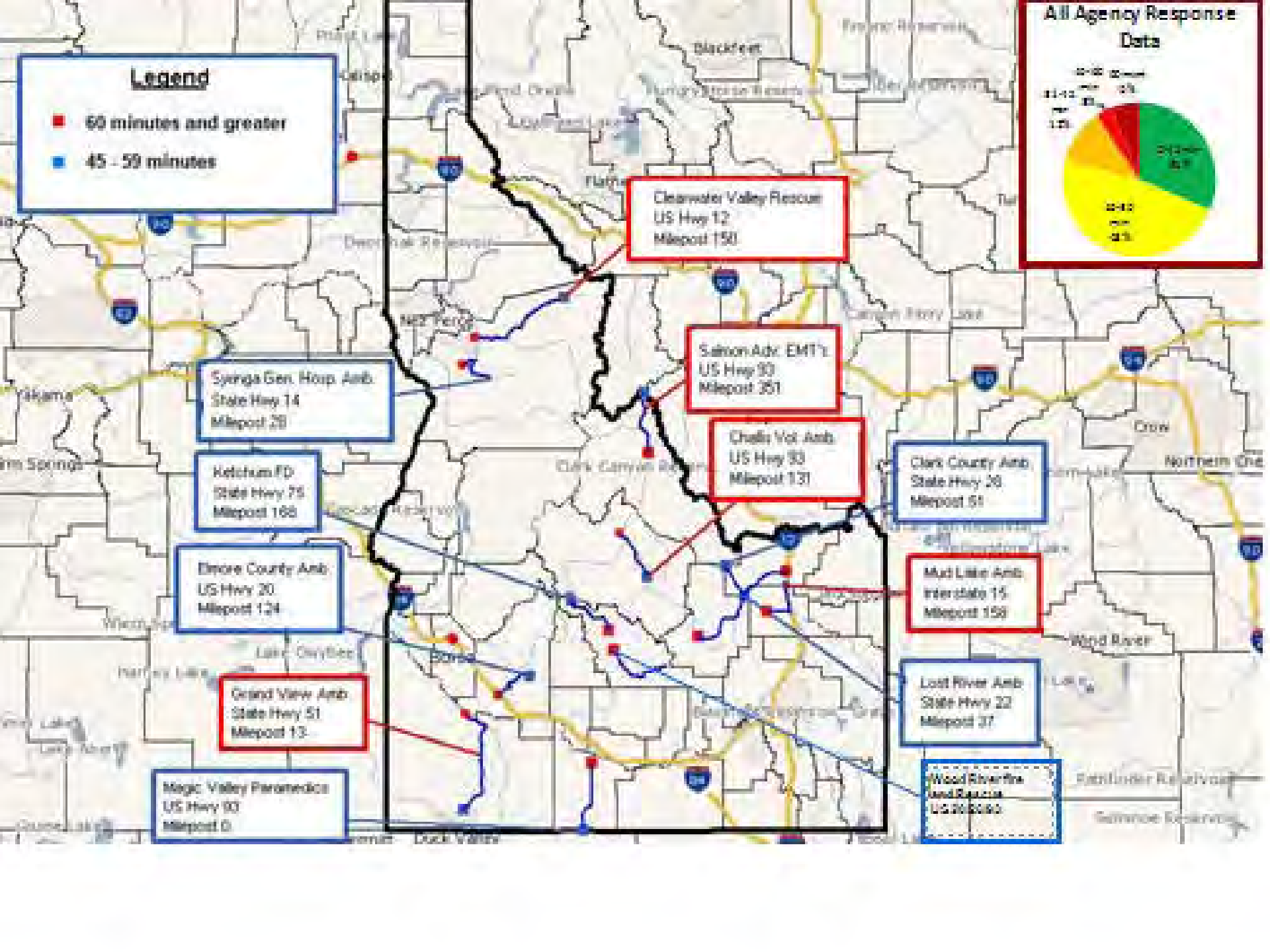


All Agency Response Data



Legend

- 60 minutes and greater
- 45 - 59 minutes



Clearwater Valley Rescue
US Hwy 12
Milepost 150

Salmon Adv. EMT's
US Hwy 90
Milepost 351

Challis Vol. Amb.
US Hwy 90
Milepost 131

Clark County Amb.
State Hwy 20
Milepost 51

Mud Lake Amb.
Interstate 15
Milepost 159

Lost River Amb.
State Hwy 22
Milepost 37

Wood River Ambulance
US 200000

Syngma Gen. Hosp. Amb.
State Hwy 14
Milepost 28

Ketchum FD
State Hwy 75
Milepost 168

Elmore County Amb.
US Hwy 30
Milepost 124

Grand View Amb.
State Hwy 51
Milepost 13

Magic Valley Paramedics
US Hwy 90
Milepost 0



MODEL
INVENTORY
OF
EMERGENCY
CARE
ELEMENTS
("MIECE")



MODEL INVENTORY OF EMERGENCY CARE ELEMENTS (“MIECE”)

- Q: “If a mass casualty incident happened on this stretch of highway, what RESOURCES could we expect to be available?”
- Common, defined measurement system
- Geographically focused
- Allows for comparison between areas



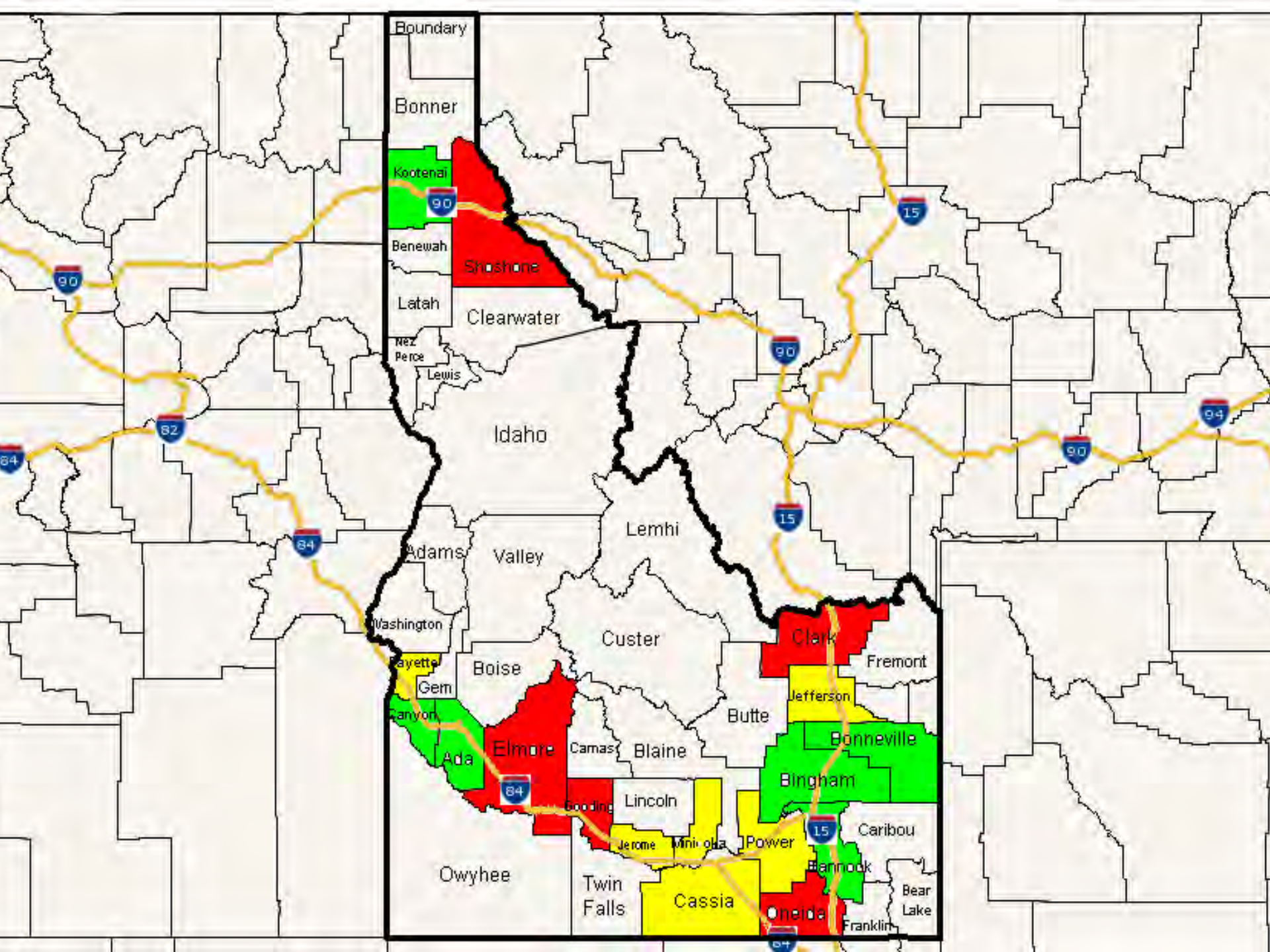
MODEL INVENTORY OF EMERGENCY CARE ELEMENTS

- Primary user intended to be the state EMS office
- Not intended to generate automatic solutions
- Acknowledges limitations as well as strengths
- Results in points and scale
- Ranges on the scale = degree of risk

MIECE Components



- TRANSPORTATION
- PERSONNEL
- EQUIPMENT
- MEDICAL FACILITIES
- PSAPs and COMMUNICATIONS
- OTHER



Boundary

Bonner

Kootenai

Benewah

Latah

Nez Perce

Lewis

Shoshone

Clearwater

Idaho

Adams

Valley

Lemhi

Washington

Custer

Clark

Fremont

Payette

Boise

Jefferson

Gem

Canyon

Ada

Elmore

Camas

Blaine

Butte

Bonneville

Bingham

Owyhee

Twin Falls

Cassia

Gooding

Lincoln

Jerome

Minidoka

Power

Bannock

Caribou

Oneida

Franklin

Bear Lake

Timeline - MIECE

- Proof of Concept
Review by
NASEMSO
Members 10/10
- Blue Ribbon Panel
Review 12/10
- Deliver to NHTSA
2/11



WHAT WE'VE HEARD SO FAR:

- The documents should be kept separate
- “Event” should be renamed “Incident”
- ERRA may be too comprehensive for local use
- OTHER INPUT?

Dia Gainor

gainord@dhw.idaho.gov

208-334-4000

