



# Rural Emergency Medical Services

DIA GAINOR, NASEMSO

# The Responders: Safe and Alive



# Rural EMS Personnel: Safe and Alive?

(this doesn't add up for EMS)

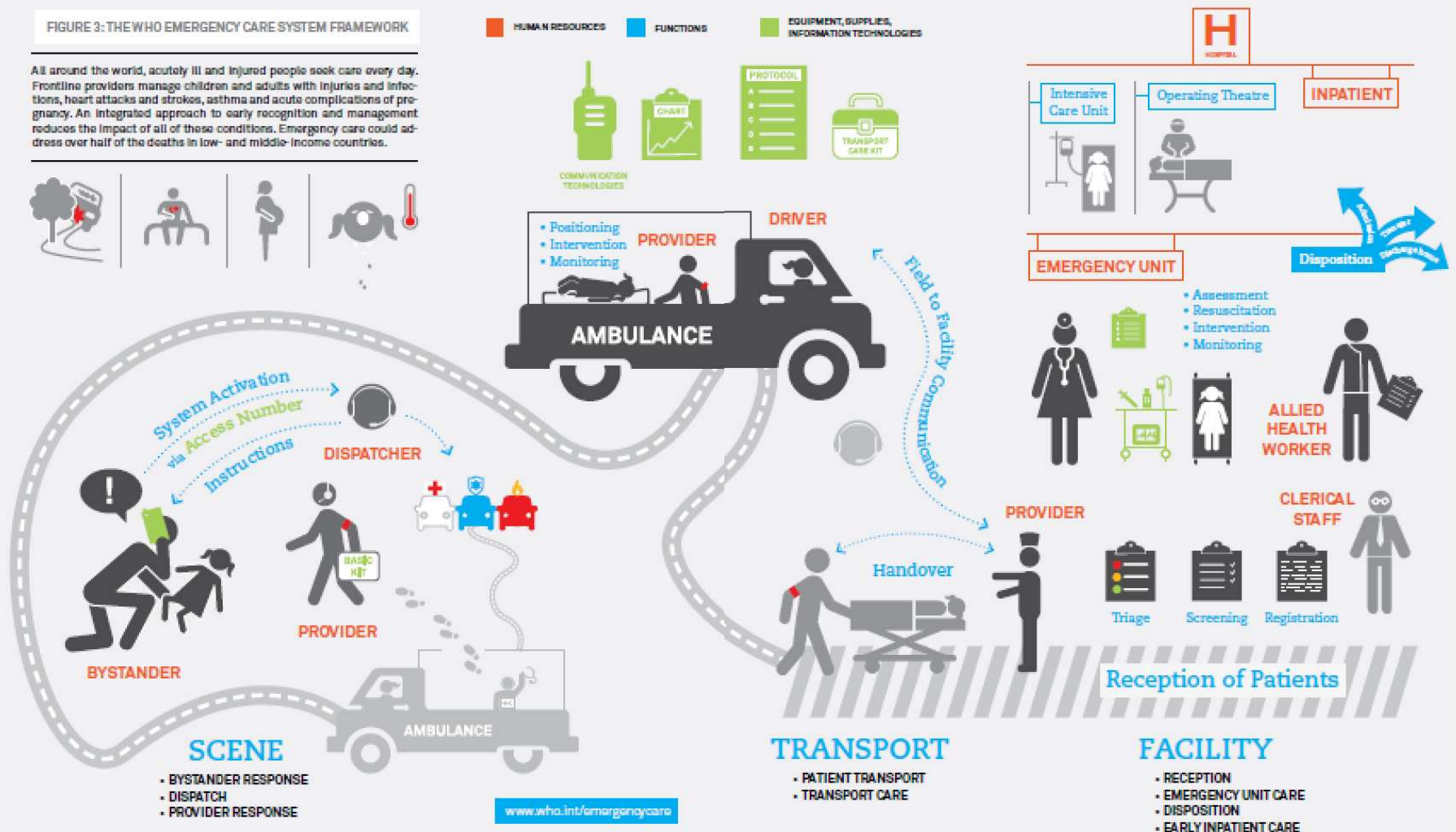
Discipline	Train-the-Trainer	Total	Percent
Law Enforcement	2,996	80,026	28.8%
Fire/Rescue	3,344	102,559	36.9%
Towing and Recovery	599	22,562	8.1%
EMS	551	13,264	4.8%
Transportation/Public Works	1,692	29,958	10.8%
Other Disciplines	714	29,521	10.6%
<b>Total Trained</b>	<b>9,896</b>	<b>277,890</b>	<b>100.0%</b>
<b>Number of Sessions</b>	<b>324</b>		

Out of +/-400,000 non-fire???

# The Victims: Safe and Alive

FIGURE 3: THE WHO EMERGENCY CARE SYSTEM FRAMEWORK

All around the world, acutely ill and injured people seek care every day. Frontline providers manage children and adults with injuries and infections, heart attacks and strokes, asthma and acute complications of pregnancy. An integrated approach to early recognition and management reduces the impact of all of these conditions. Emergency care could address over half of the deaths in low- and middle-income countries.



Clear the Roads? Clear the victims.



# The Golden Hour in the USA



43% of fatal  
motor vehicle  
crash victims  
reach a  
hospital alive

NHTSA, 2016



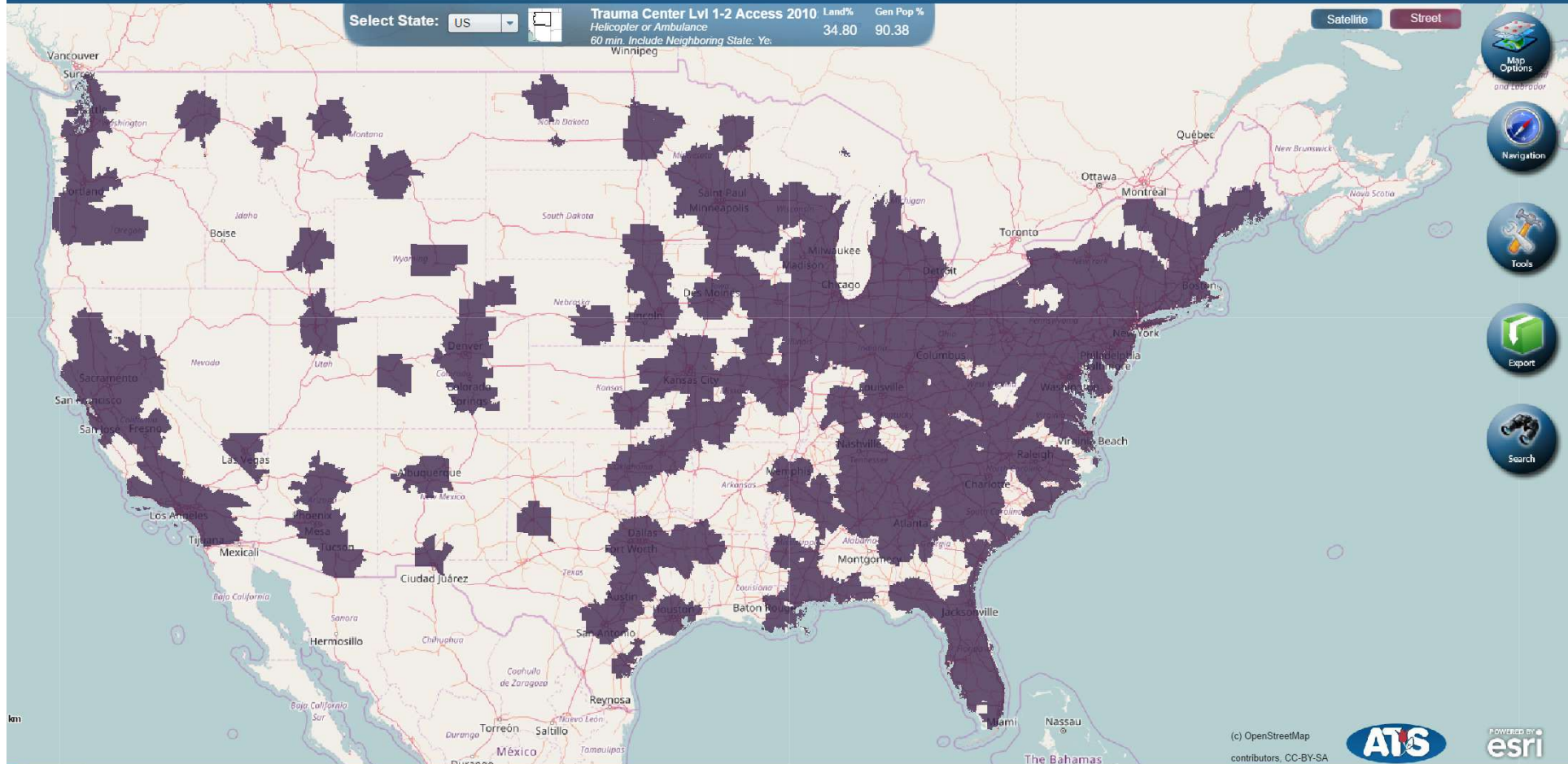
Select State: **US**



**Trauma Center Lvl 1-2 Access 2010** Land% Gen Pop %  
Helicopter or Ambulance 34.80 90.38  
60 min. Include Neighboring State: Yes  
Winnipeg

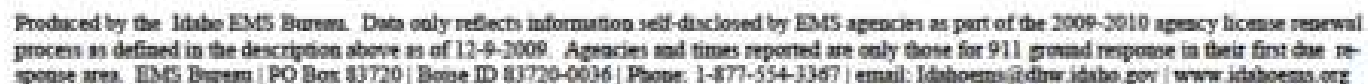
Satellite

Street



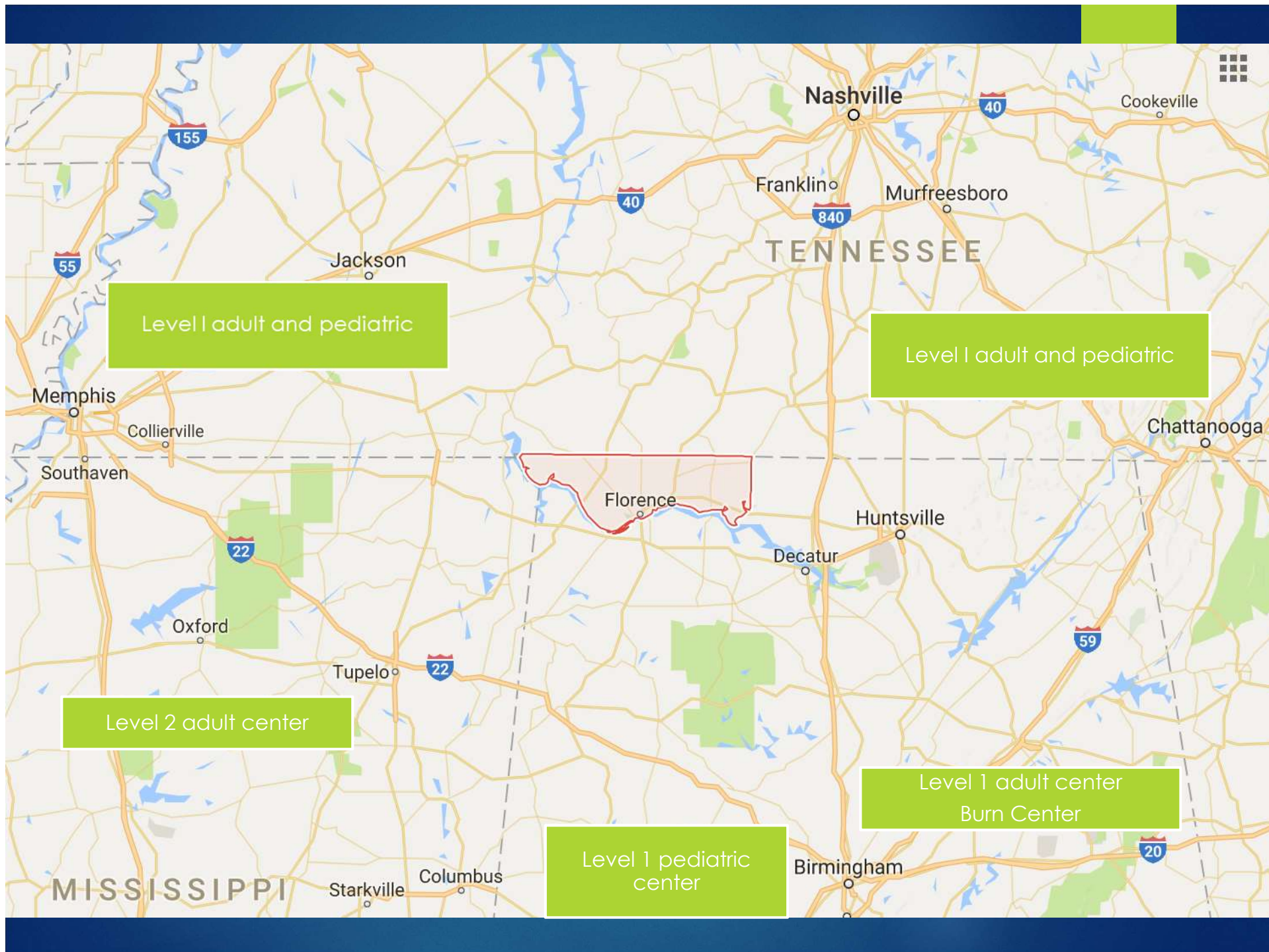
**Idaho Emergency Medical Services**

- 



## When I'm queen for the day and until prevention is 100% successful:

- ▶ Improve incident detection, 911 access, and Next Generation 911 system capabilities
- ▶ Improve on-scene medical care, trauma triage, and transport decisions (destination and mode)
- ▶ Assure access to trauma centers



# In the future...???

- ▶ Technology. Technology. Then more technology.
- ▶ “Don’t Die” kit in every vehicle, motorcycle and bicycle
- ▶ Every middle school grad knows what (and what not) to do post crash
- ▶ Multisource deterministic contemporaneous records linkage
- ▶ NTSB focus always includes the post-crash phase & research in post crash care is balanced

# And in the future...



Dia Gainor

[Dia@NASEMSO.org](mailto:Dia@NASEMSO.org)

[www.nasemso.org](http://www.nasemso.org)

208-861-4841

