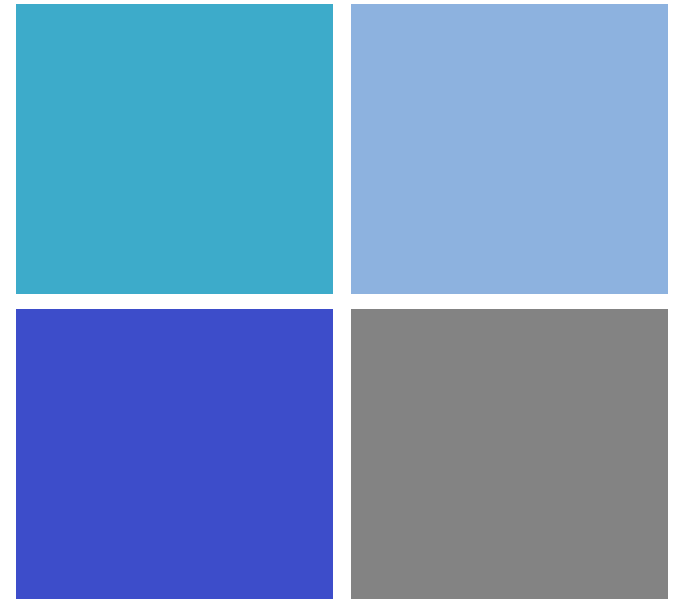


Innovation and Improvement Center



Emergency Medical Services for Children



ABCs of Quality Improvement

NASEMSO Spring Meeting 2017

Manish I. Shah, MD, MS

EIIC Prehospital/State Partnership Domain Lead

Acknowledgement

- The Health Resources and Services Administration (HRSA), Maternal Child Health Bureau (MCHB), EMS for Children (EMSC) Program's EIC is supported in part by the HRSA of the U.S. Department of Health and Human Services (HHS) under grant number U07MC29829.
- This information or content and conclusions are those of the author and should not be construed as the official position or policy of, nor should any endorsements be inferred by HRSA, HHS or the U.S. Government.





SNO-BLIZ

PRICES RANGE
FROM 1^{c} TO 6^{00}

SNO-BLIZ

ONE FLAVOR ONLY-TWO FLAVORS EXTRA

THESE PRICES ONE FLAVOR ONLY
PLAIN FLAVOR WITH ICE & SYRUP

SMALL
CUPS
BUCKETS

40¢ to 450-5.75
500-800

SUNDAE

ICE-SYRUP-CREAM-CRUSHED
PINEAPPLE AND CHERRY

6⁵⁰

DUPE

BABY DUPE 7⁵⁰ SUPER DUPE 8⁵⁰
ICE-SYRUP-CRUSHED PINEAPPLE
MARSHMALLOW & CHERRY

THERE ARE NO

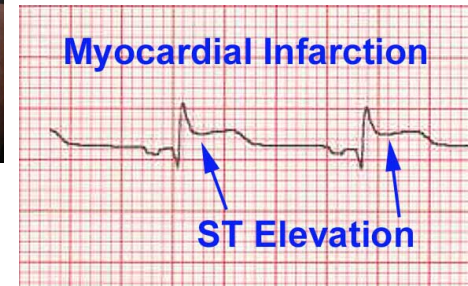
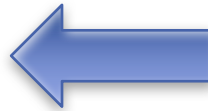
SHORT-CUTS

TO

QUALITY



Why Do We Do What We Do?



EMS for Children Program Mission/Aims

The EMSC program's mission is to reduce child and youth mortality and mortality resulting from severe illness or trauma by:

- Ensuring state of the art emergency medical care for ill/injured child/adolescent is available when needed
- Ensuring that pediatric services are well integrated in the existing state EMS system and backed by optimal resources
- Ensuring that the entire spectrum of emergency services (primary prevention, acute care, rehab) is provided to children at the same level as adults



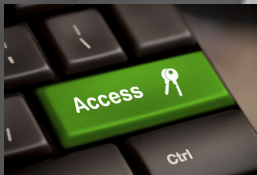


PATIENT-CENTERED

EFFICIENT



EFFECTIVE



ACCESS

QUALITY

COORDINATION

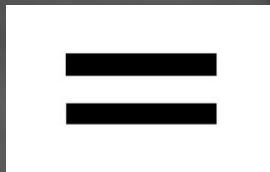
TIMELY



SAFE



EQUITABLE



Institute of
Medicine

System Design



Knowledge and availability of evidence-based practice



Front desk unaware of death

Lab results not known during transfer

Every system is perfectly designed to achieve exactly the results it gets

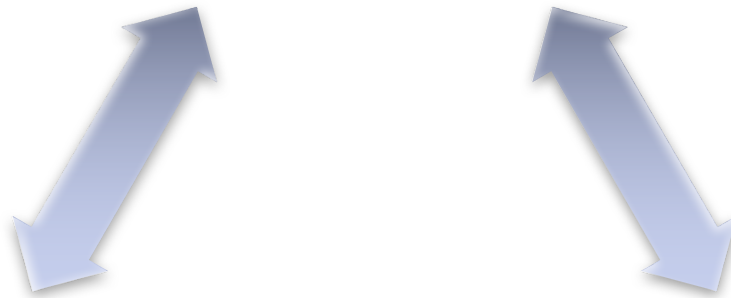
Inability to transmit the ECG



Timely transport in the transfer process



Problem



Data



Systems
Interventions

A Pediatric EMS Example

Seizures are Common



Treatment Minimizes Morbidity



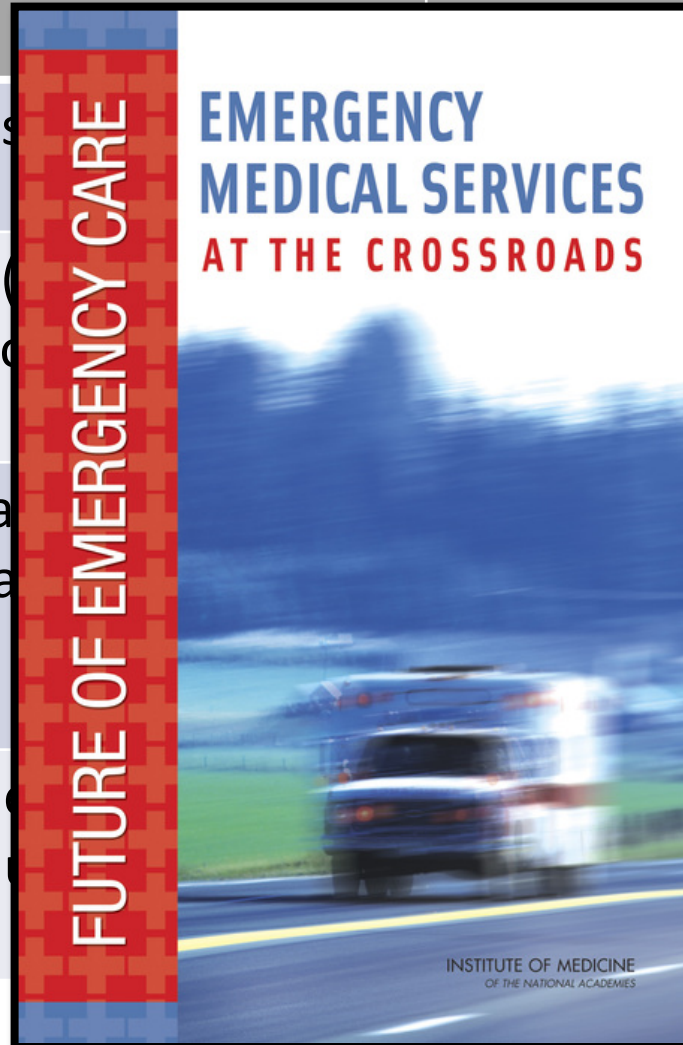
Variation in Practice Exists



Evidence Based Guideline

DO

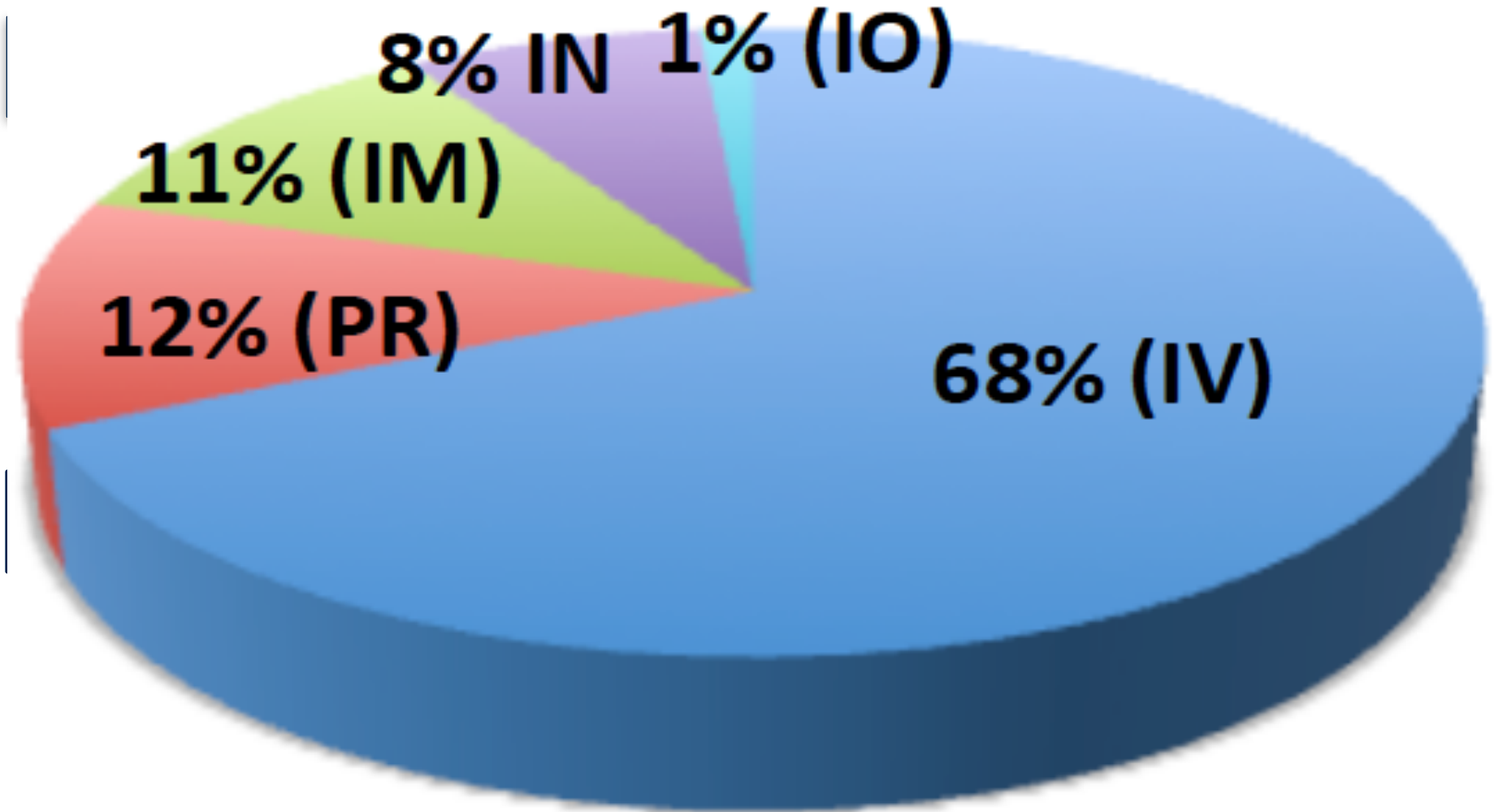
- Check a blood glucose
- Give dextrose IV/IO (or glucagon IM for hypoglycemia <math>< 70\text{ mg/dL}</math>)
- Give IM/IN benzodiazepine for seizure line treatment (midazolam 0.2 mg/kg)
- IV/IO benzodiazepine can be given subsequently including diazepam



DON'T

- Give oral medication
- Give IV/IO initially
- Give medical control for the first doses of medication (apnea or 2 doses)

Data Demonstrating a Problem



The Model for Improvement

Aim Statement →

Model for Improvement

What are we trying to accomplish?

How do we know that a change is an improvement?

What changes can we make that will result in the improvements we seek?



Reference: Langley G, Nolan T, Norman C, Provost L (1996).
The Improvement Guide: a practical approach to enhancing
organisational performance, Jossey Bass Publishers, San Francisco

By 2020, 90% of actively seizing children will receive IN/IM midazolam as 1st line treatment in this EMS system



The Model for Improvement

Model for Improvement

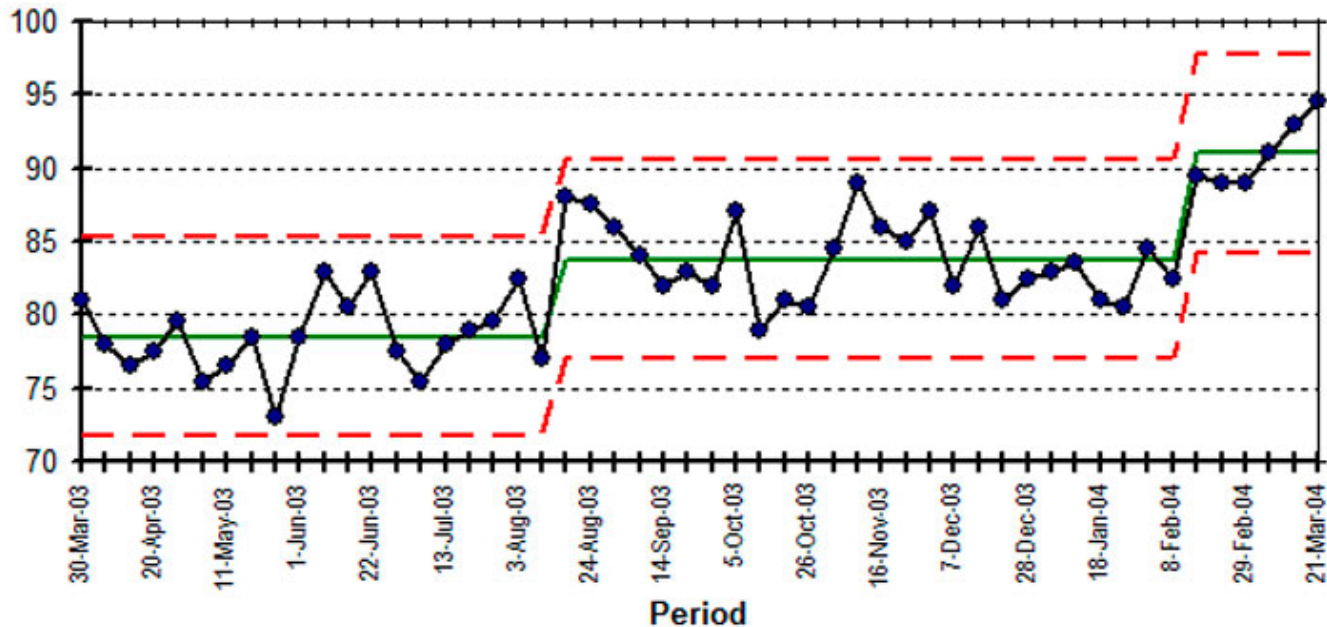
What are we trying to accomplish?

How do we know that a change is an improvement?

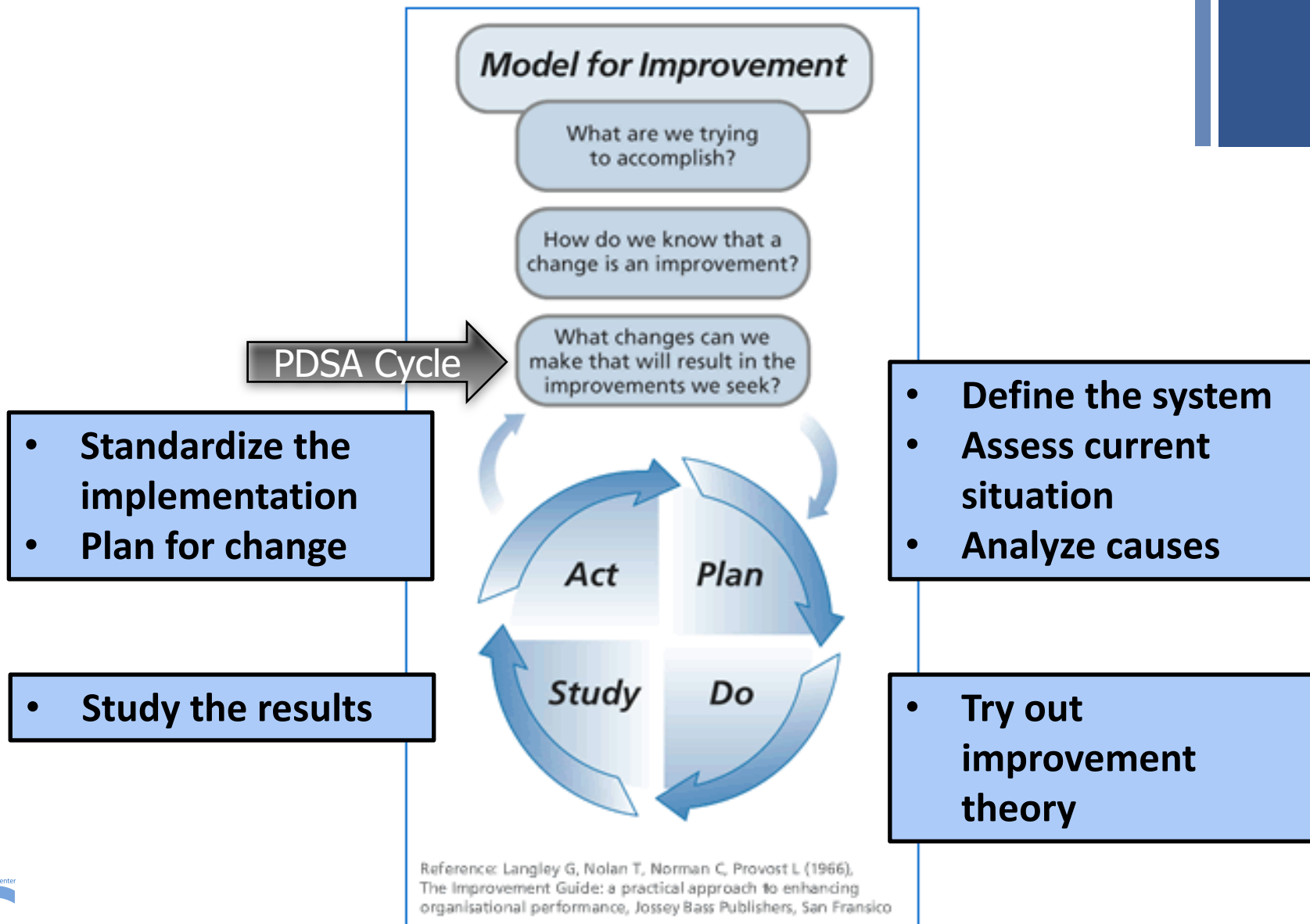
Run Charts

% Conformance to Goal

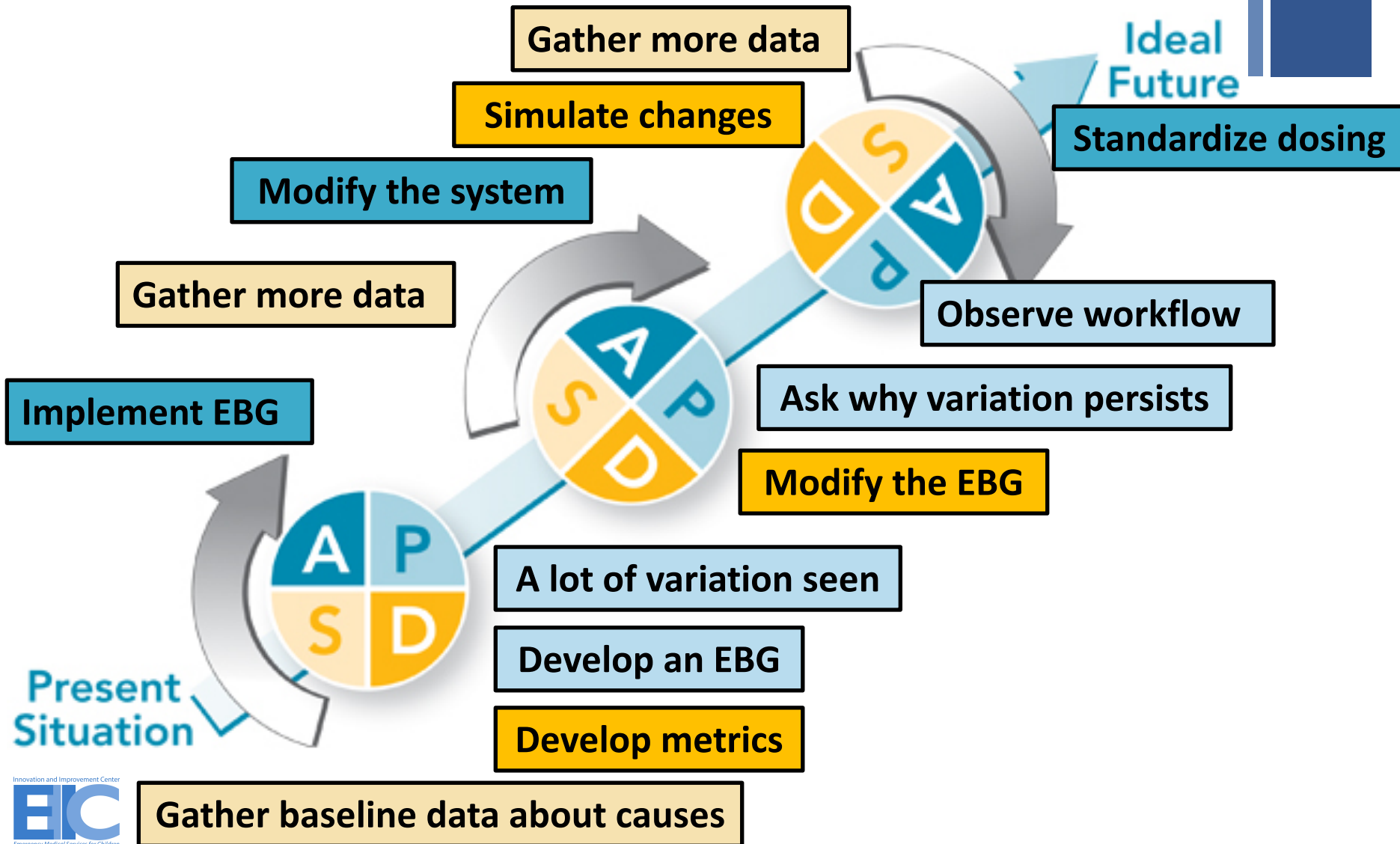
Special Cause Flag



The Model for Improvement



Repeated PDSA Cycles



Tools for Improvement



**View
Processes**



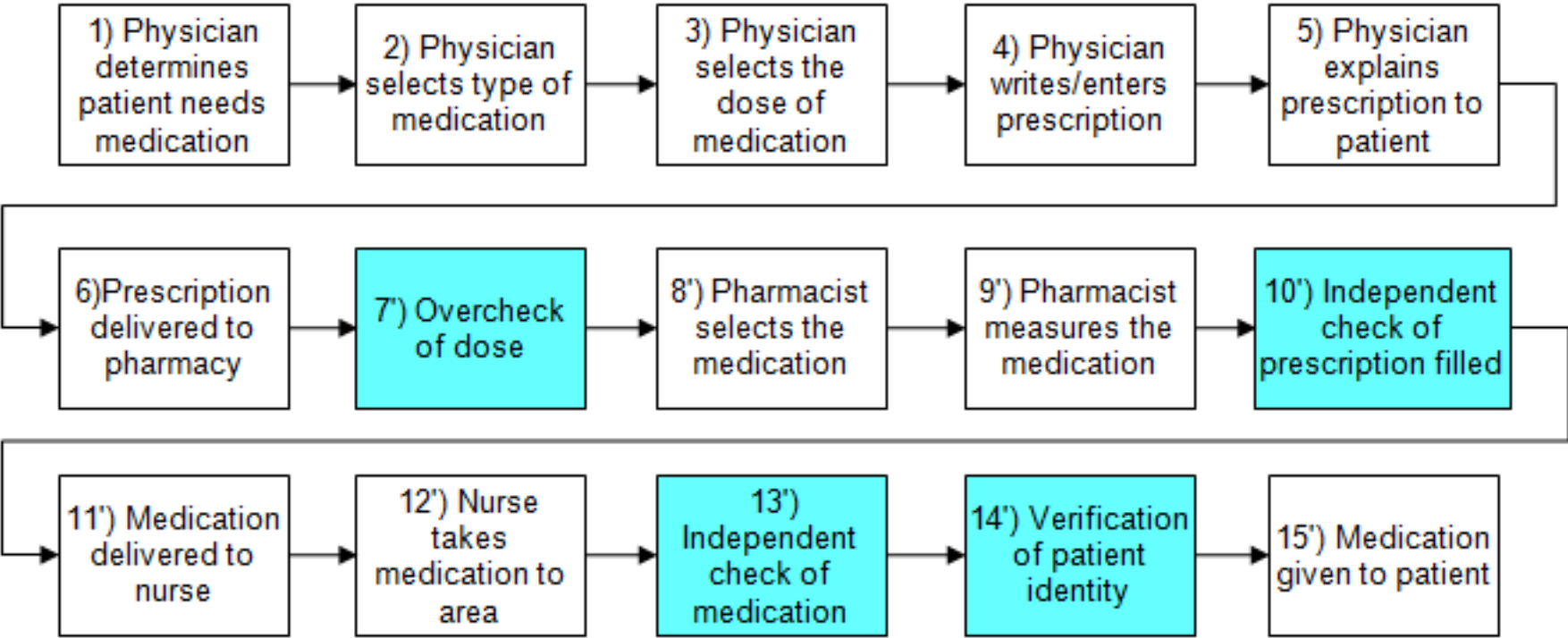
**Measure
Change**

**Organize
Information**



View Processes

Process Mapping



Organize Information

Cause/Effect Diagram
(aka Fishbone Diagram)

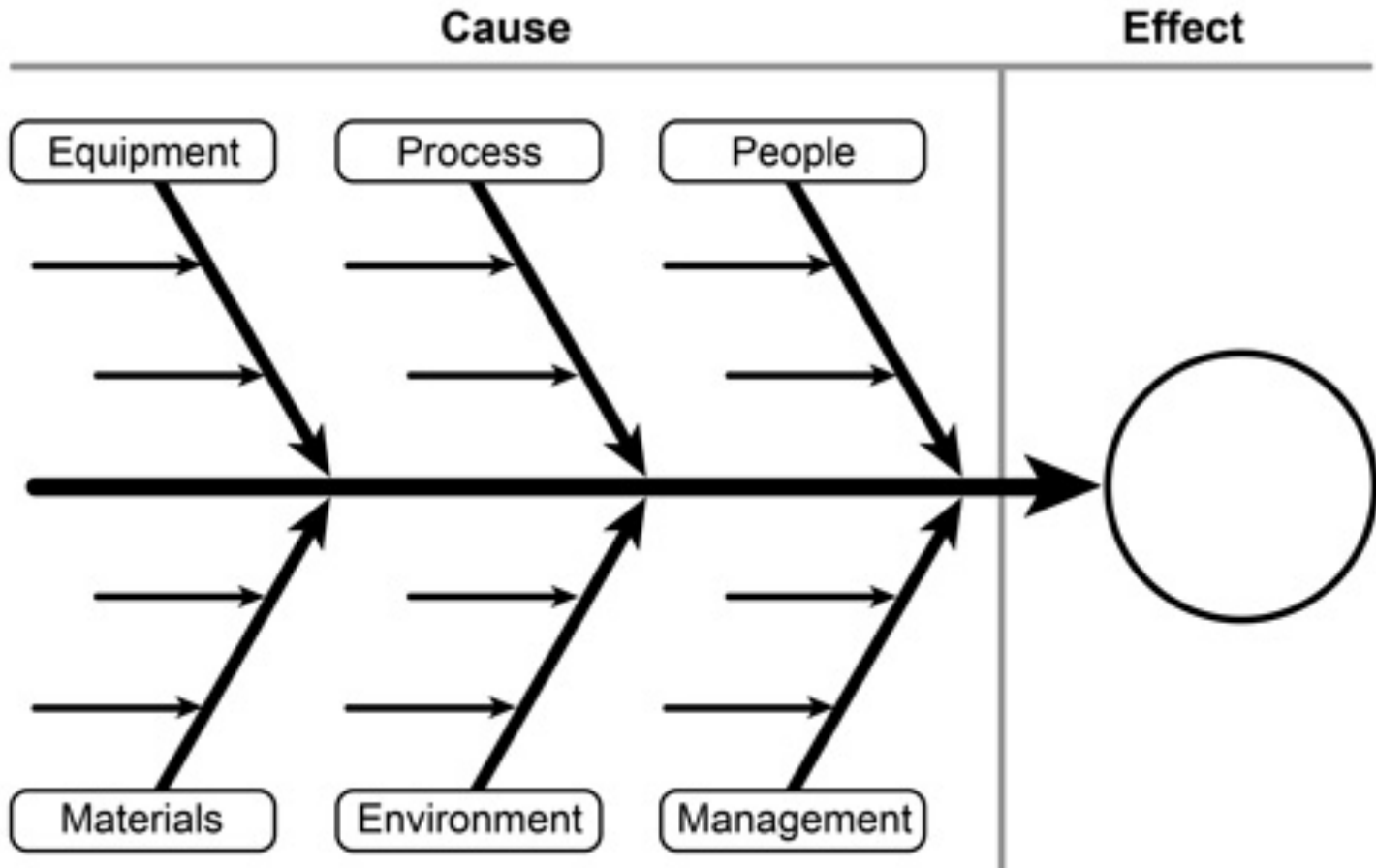
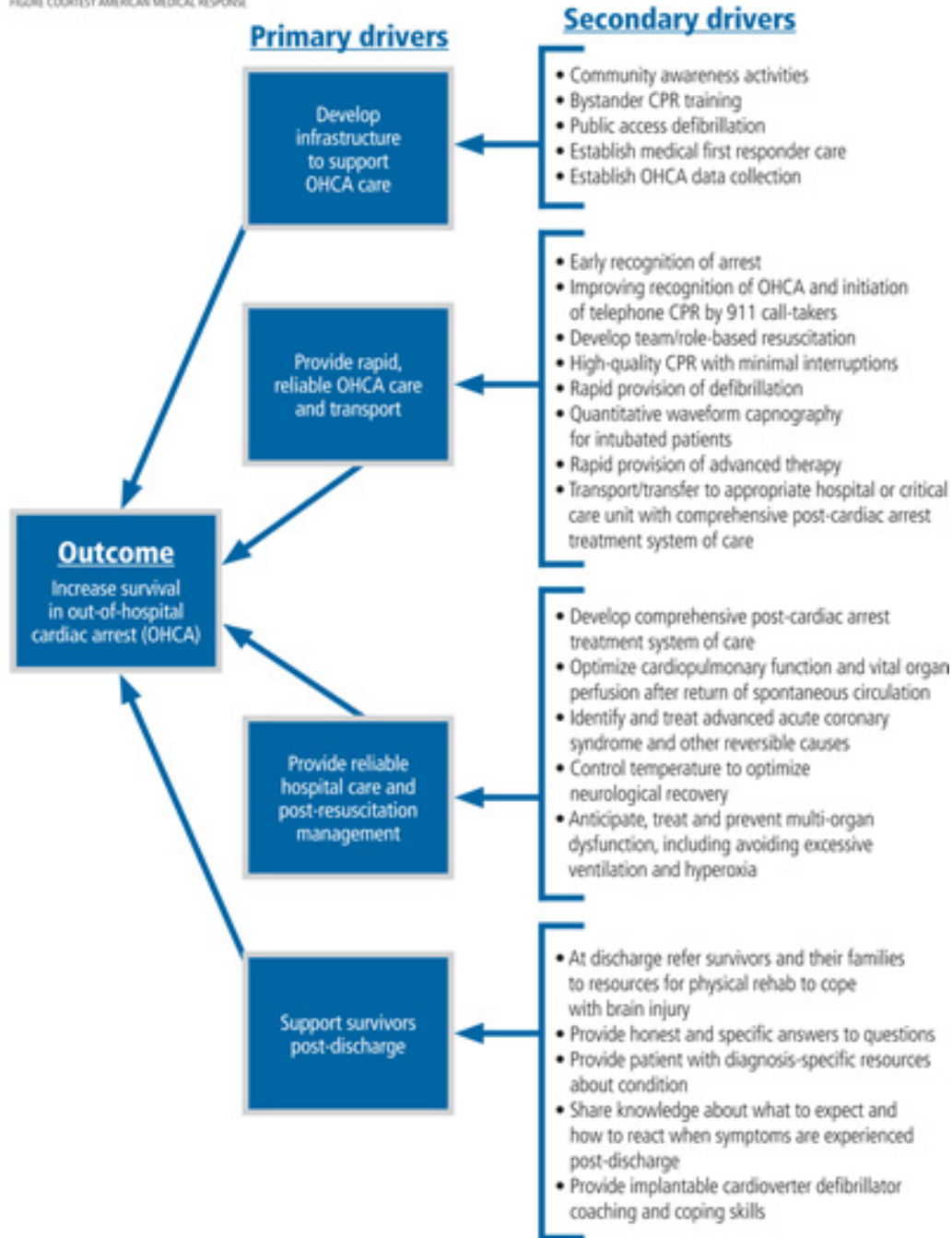


Figure 1: Driver diagram for increasing OHCA survival outcomes

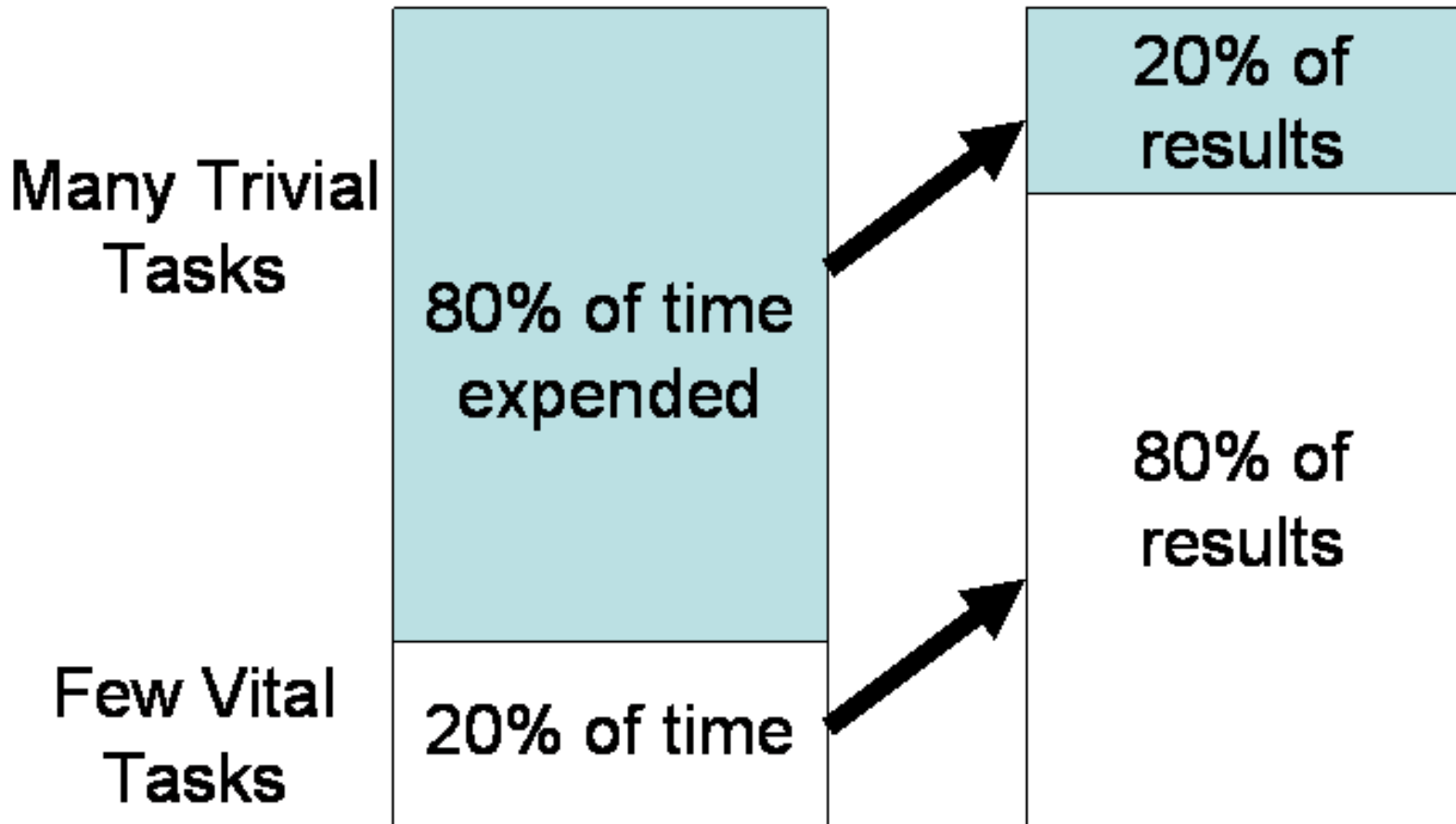
FIGURE COURTESY AMERICAN MEDICAL RESPONSE



Key Driver Diagram

Measure Change

Pareto Principle

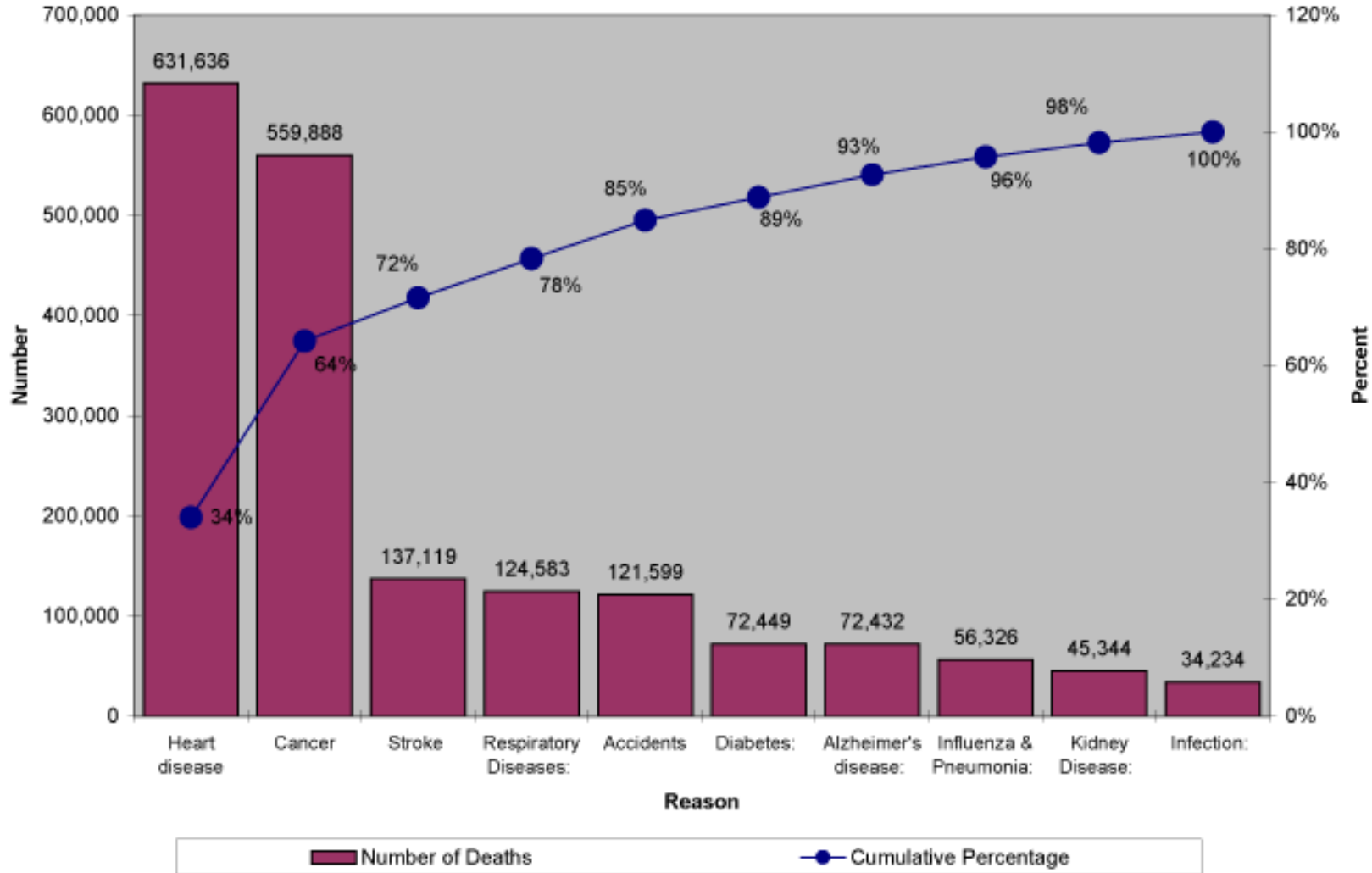


Measure Change

Pareto Chart

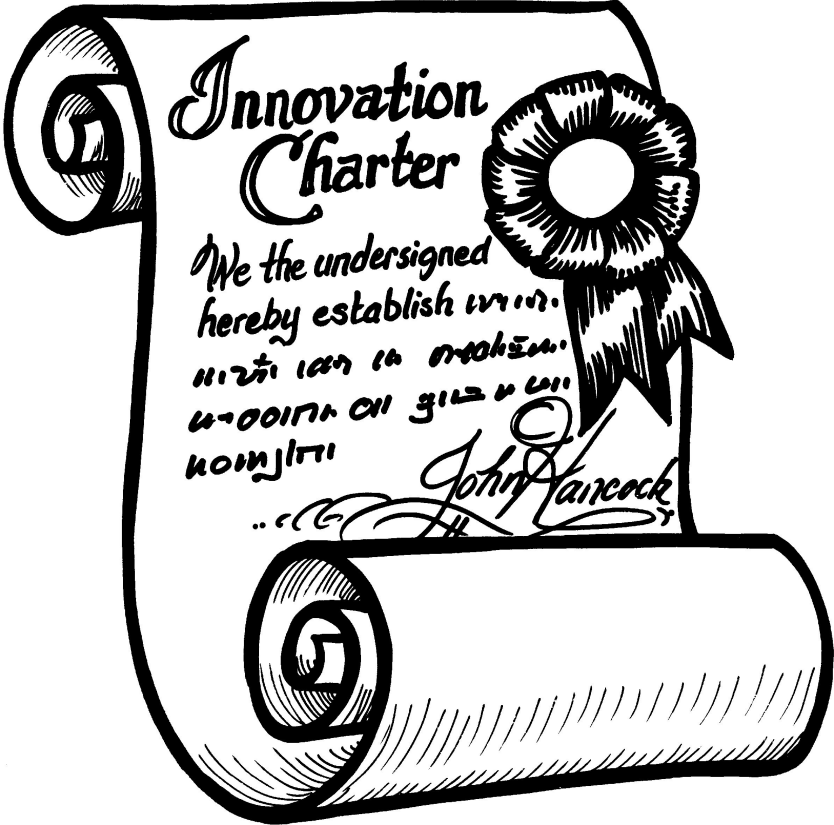


2006 CDC Top 10 Killers
in the United States



Quality Project Management

DEVELOP AN INNOVATION CHARTER



Charter Components

Title, Background, Problem Statement

SMART Aims

Measure	Definition of measure	Data Source	Measure Type	IOM Quality Domain
Medication Route	% of actively seizing patients that receive IN/IM midazolam	NEMESIS Variable #	Process	Effectiveness
Time to Seizure Cessation	Time seizure stopped after on-scene arrival	NEMESIS Variable #	Outcome	Timeliness

Charter Components

Key Stakeholders

EMS, ED, Neurologists, Pharmacist, Parents

Project Scope

Prehospital, Pediatric, ALS care in 1 EMS system

Potential Impact

Improve quality and safety of care for seizures

Potential Challenges

Provider use of IN/IM route limited by training & equipment

Tools for Improvement

Process mapping, Pareto charts, cause/effect diagrams

How Data Will Be Collected

Weekly query of EMS database using NEMESIS variables

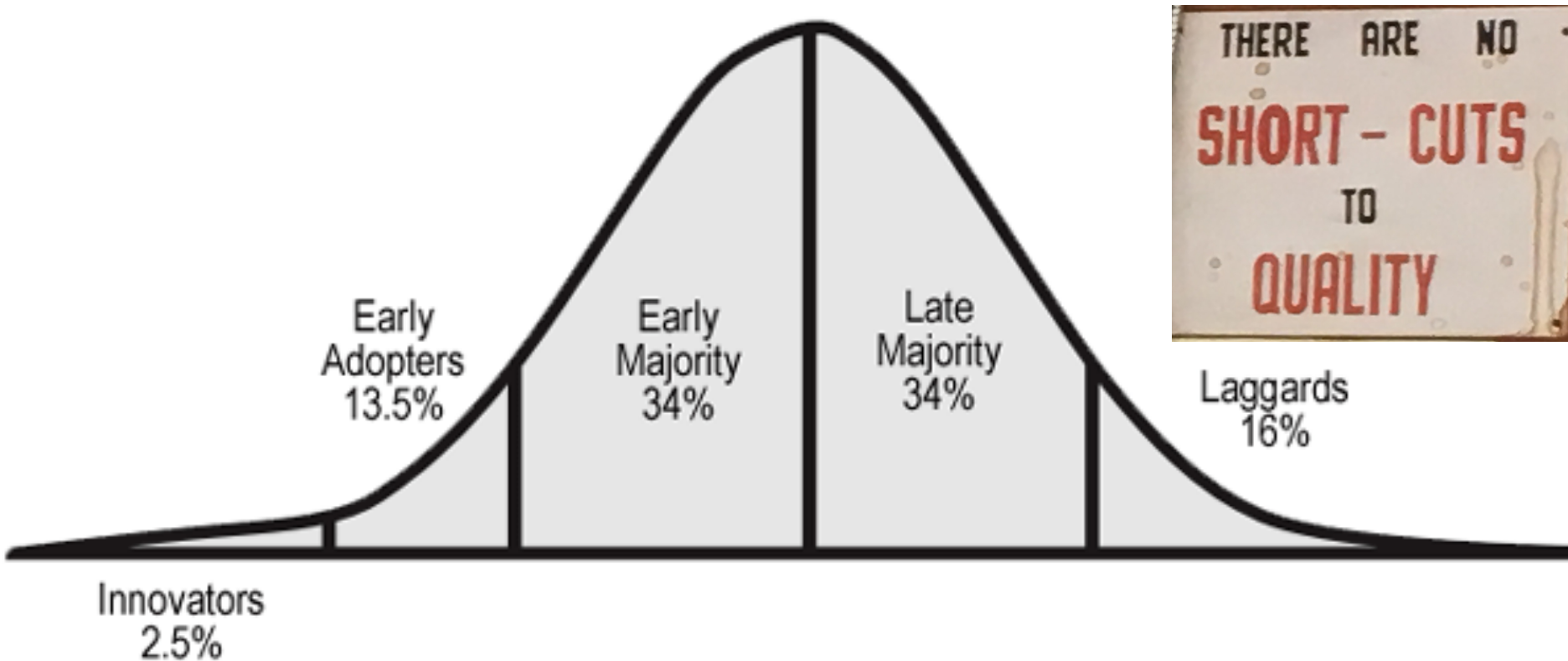
How Data Will Be Analyzed

Statistical process control charts; share data with providers once a month through a special bulletin

Changing Culture Takes Time



Categories of Innovativeness*



*From E.M. Rogers, *Diffusion of Innovations*, 4th edition (New York: The Free Press, 1995)