

NASEMSO

Organization & Structure

- NASEMSO is governed by the Board of Directors
 - The Executive Committee is authorized to conduct business of NASEMSO in lieu of the Board
- Councils, Committees, and Regions report to the Board of Directors

Executive Committee

Immediate
Past
President

President

President
Elect

Treasurer

Secretary

Member-
at-Large

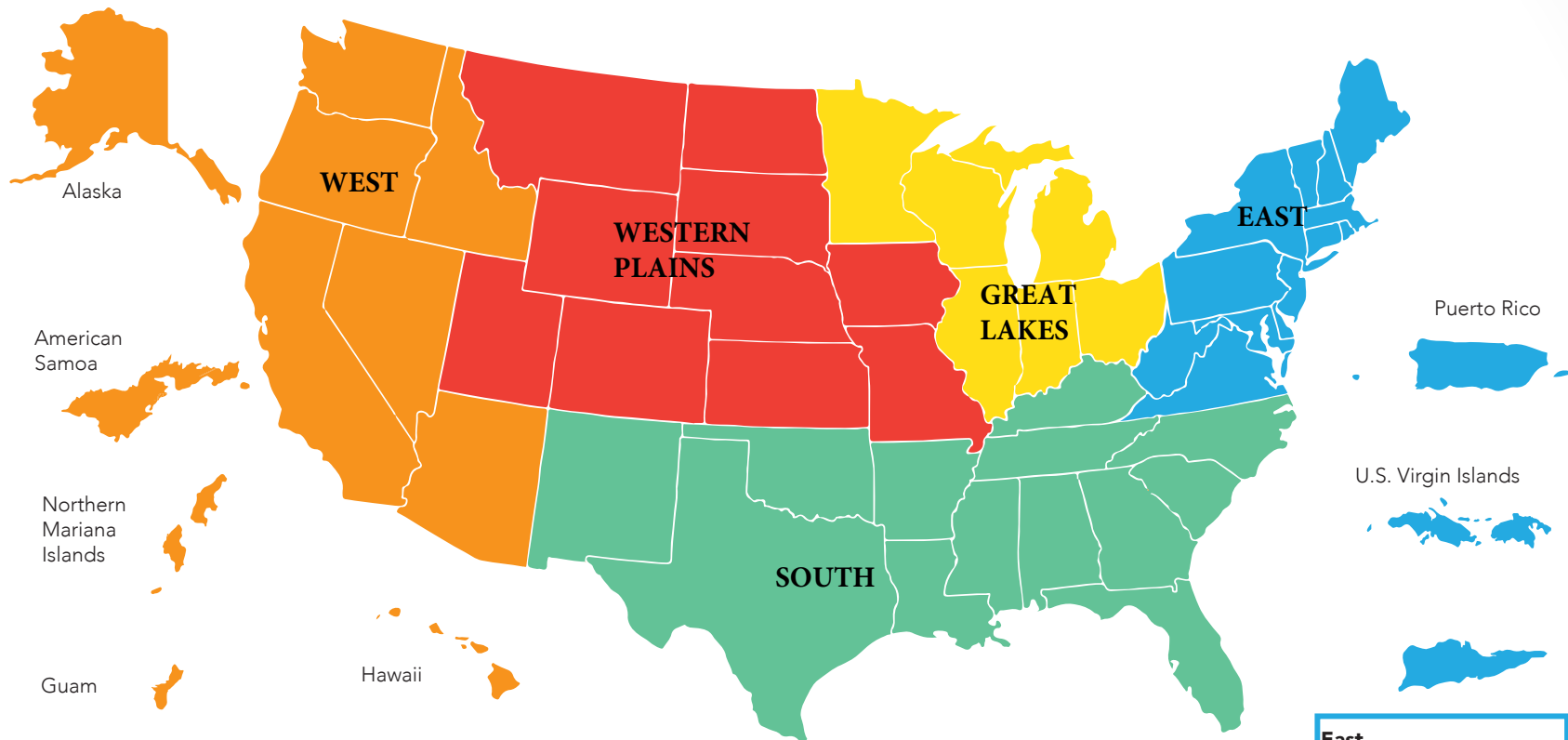
Board of Directors

Executive
Committee

Regional Chairs

Council
Chairs

Regional Map



West

Alaska
American Samoa
Arizona
California
Guam
Hawaii
Idaho
Nevada
Northern Mariana Islands
Oregon
Washington

Western Plains

Colorado
Iowa
Kansas
Missouri
Montana
Nebraska
North Dakota
South Dakota
Utah
Wyoming

Great Lakes

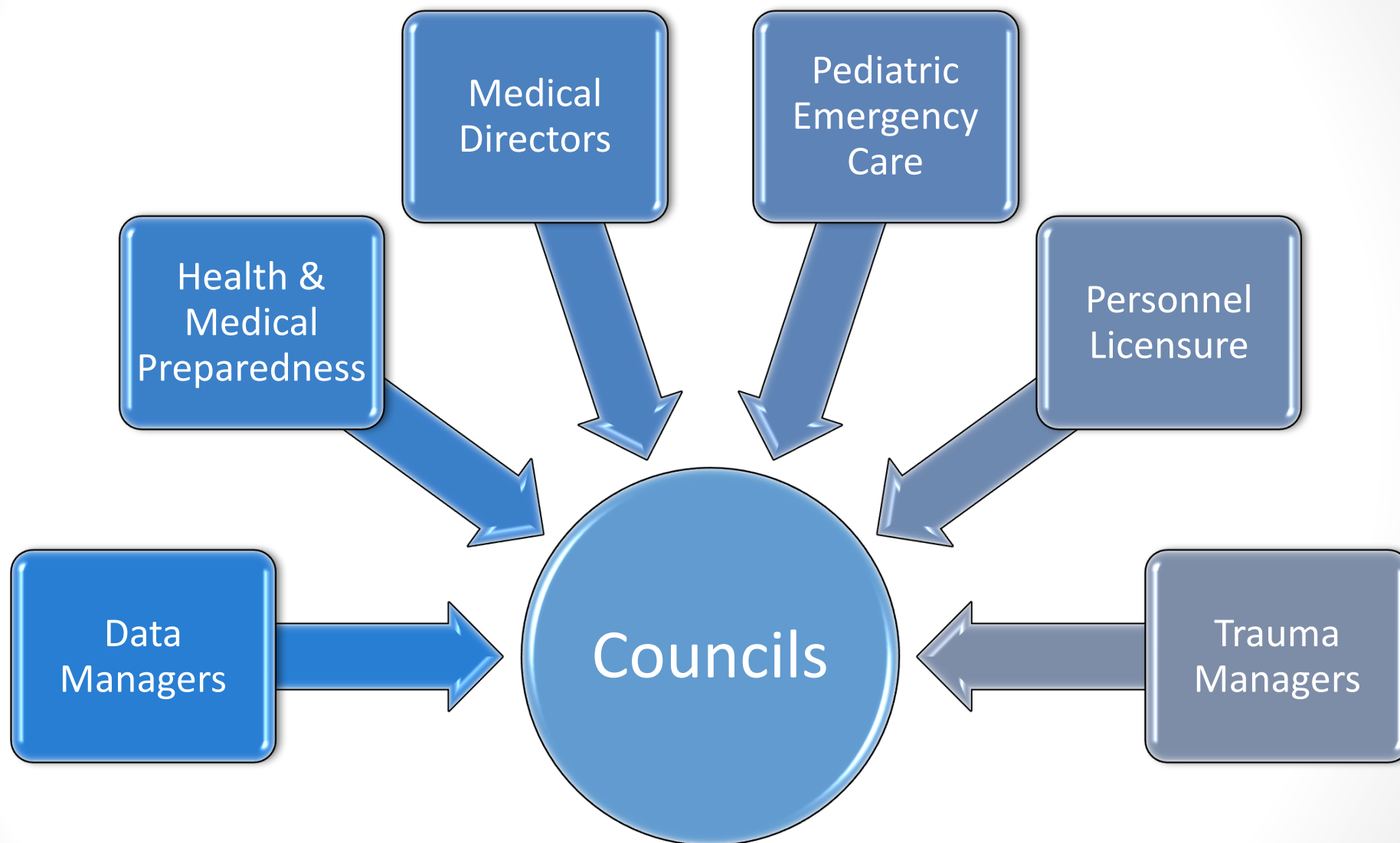
Illinois
Indiana
Michigan
Minnesota
Ohio
Wisconsin

South

Alabama
Arkansas
Florida
Georgia
Kentucky
Louisiana
Mississippi
New Mexico
North Carolina
Oklahoma
South Carolina
Tennessee
Texas

East

Connecticut
Delaware
Maine
Maryland
Massachusetts
New Hampshire
New Jersey
New York
Pennsylvania
Puerto Rico
Rhode Island
U.S. Virgin Islands
Vermont
Virginia
Washington, D.C.
West Virginia



Types of Committees

Operational Standing Committees

Mission-specific Standing Committees

Ad Hoc Committees





