

EDUCATION, CERTIFICATION, and LICENSURE

Kyle Thornton, EMT-P

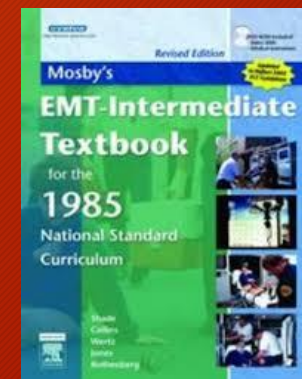
Bureau Chief

New Mexico Emergency Medical Systems Bureau



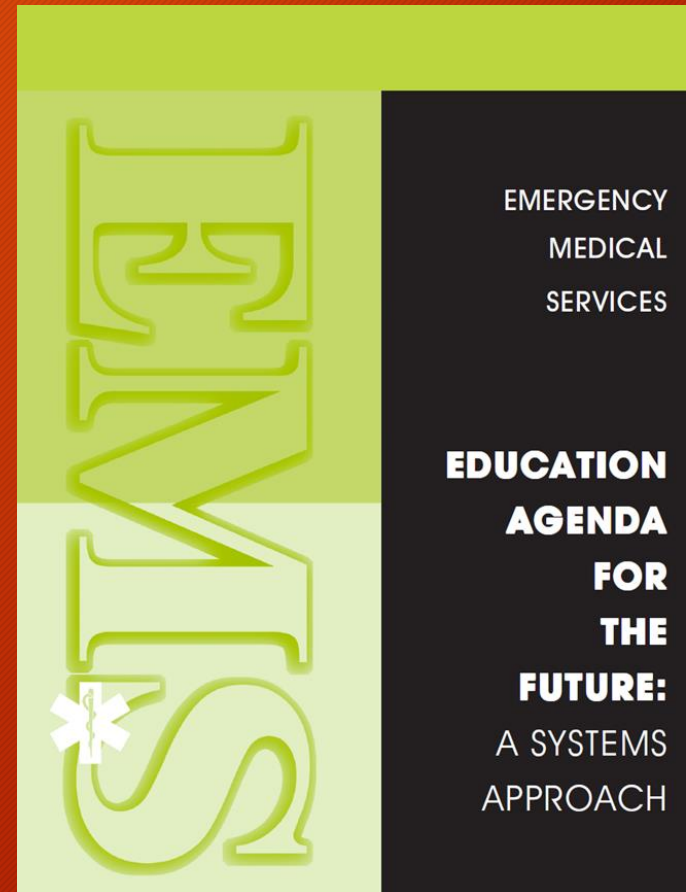
The “Old” System... National Standard Curricula

- Five, level-specific curricula published by NHTSA.
 - First Responder, EMT-Basic, Intermediate EMT-85, Intermediate EMT-99 and EMT-Paramedic.
- Served as the foundation of EMS examinations and provider scopes of practice.
- Relied on the educational content to drive scope.
 - Proved difficult for many states when changes or deviations were desired in the scopes.



EMS Education Agenda for the Future; A Systems Approach

- Published in 2000 - A product of the original “EMS Agenda for the Future”
- Led by NASEMSO, sponsored by NHTSA, supported by multiple national partners
- Describes a system approach to education that parallels other allied health professions



EMS EDUCATION AGENDA



EMS Education Agenda for the Future; A Systems Approach

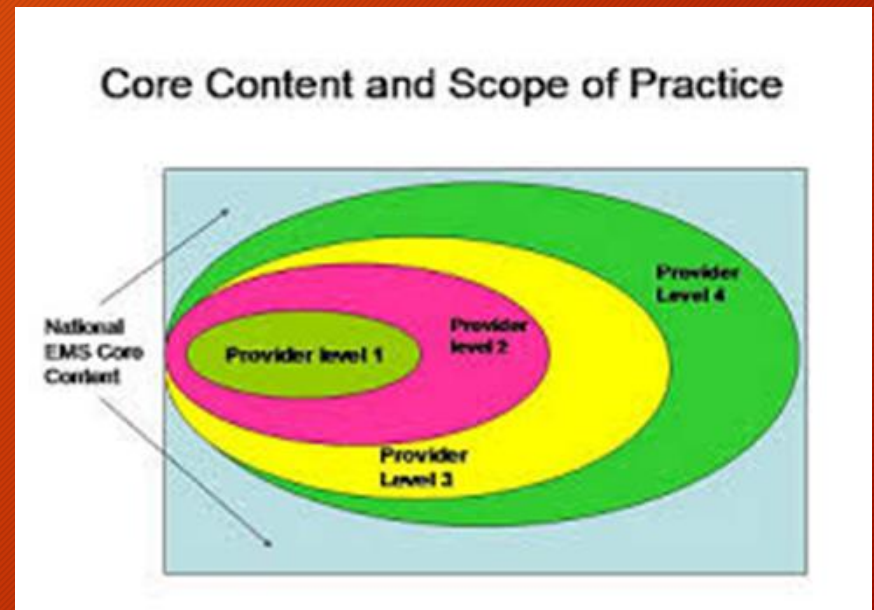
- Providers of EMS education should seek to establish relationships with academic institutions
- Such relationships should enhance the academic basis of EMS education and facilitate recognition

EMS Education Agenda

- Scope of Practice drives education, not education driving scope of practice.
- EMS Programs should have National Accreditation
- EMS National Certification involves a standardized examination process and contributes to the protection of the public by ensuring the entry-level competence of EMS providers.

SCOPE OF PRACTICE MODEL

- Adoption varies from state to state
 - Scope of Practice often drives what reciprocity is allowed from state to state
- Usually set in regulation...but sometimes statutory



Educational Standards

- Implementation varies from state to state.
 - In some states...decided by schools...not by regulatory entity
- Sometimes set in statute and/or regulation; but not always



CoAEMSP

- Recognized as the single EMS education accreditation agency.
- The CoAEMSP currently only accredits paramedic educational institutions.



LICENSURE VS CERTIFICATION

- Dependent on state statute and regulations.



CERTIFICATION

- Certification is based on graduation from an approved/accredited education program
- Process of verifying competency at a predetermined level of proficiency



LICENSURE

- Licensure is the formal permission from a governmental or other constituted authority to do something
- Process of a state government agency granting permission to practice within the state



LICENSURE ATTRIBUTES VARY

- Some of the different attributes that states and territories consider in their licensing models are:
 - Approved/Accredited Education
 - National Certification (EXAM)
 - EMS Agency Affiliation
 - Criminal Background Check



LICENSURE ATTRIBUTES VARY

- Proof of Residency
- Medical Director Approval
- Tax, Child Support or Other Unique State Requirements



STANDARD

- Graduates of CoAEMSP Accredited Programs may sit for NREMT EXAM
- Programs with an active Letter of Review from CoAEMSP
- Not all states use NREMT
 - Some use for one level but not all



Renewal of Certification/Licensure

- Become intimate with your state's requirements.
 - Things like:
 - Live versus distributive/distance
 - Synchronous versus asynchronous
 - Who approves CE's and what are the parameters
 - Why are the rules the way they are?

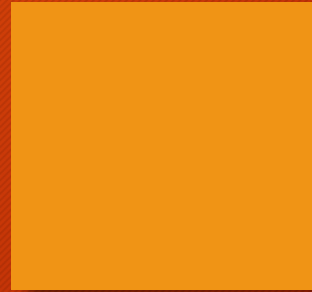
Interstate Compact

- Familiarize yourself with this document
- If you haven't already, run it by your OGC or AG office; this will become important in the future
- The compact has a goal of establishing the multistate statutory and rule necessary for limited reciprocity between states in certain situations.





Questions?



Comments?

